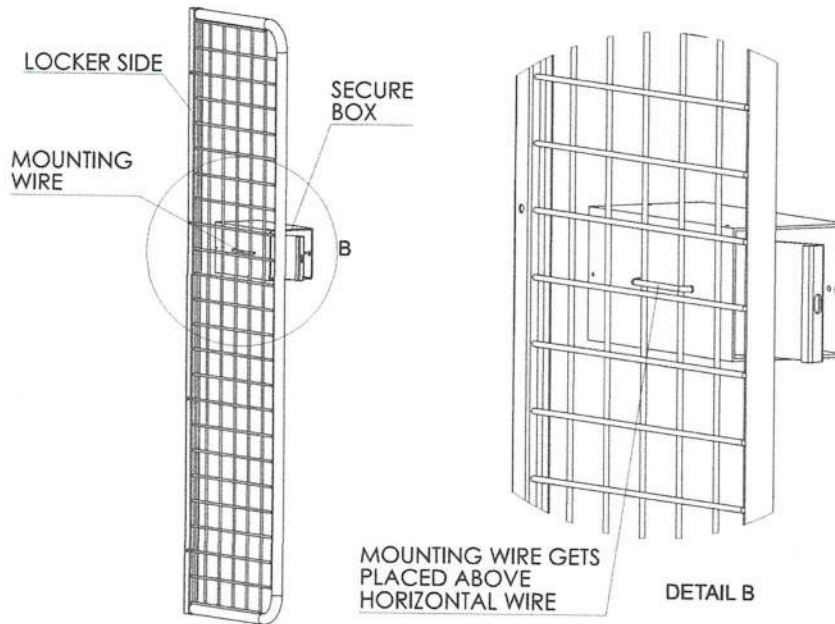


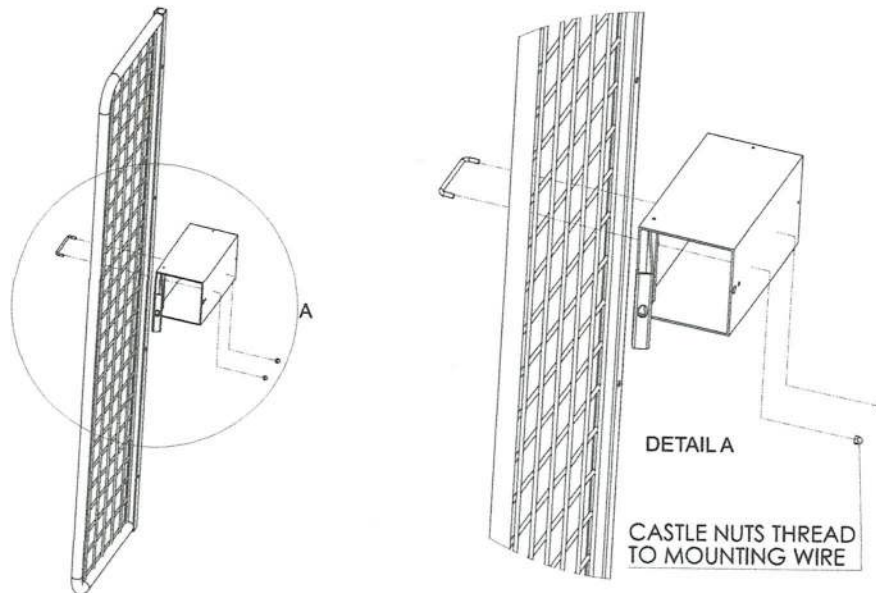
Tools Required:

- 7/16" Wrench

The diagram below shows the SECUREBOX™ installed to the locker side.



Open the SECUREBOX™ door and unthread the castle nuts from the mounting wire. Next follow the diagram below and position the mounting wire in the desired location you would like the box to be. Guide threaded ends through the holes in the box and thread the castle nuts back on and tighten with a 7/16" wrench.



THANK YOU FOR CHOOSING GEARGRID for smarter, stronger, storage solutions.

670 SW 15th Street, Forest Lake, MN 55025 | Toll Free: 888-643-6694 | 651-464-4468 | Fax: 651-464-4780
sales@GearGrid.com | www.geargridcorp.com



STEP 1:
 POSITION BOX IN DESIRED LOCATION AND
 FEED U-BOLT THROUGH THE HOLES
 POSITIONED AS SHOWN.



STEP 2:
 SECURE USING SUPPLIED WASHERS
 AND ACORN NUTS AS SHOWN.

GEARGRID		DATE:	REV:
<small> GEARGRID INC. 10000 W. 10TH AVE. DENVER, CO 80202 TEL: 303.440.1100 FAX: 303.440.1101 WWW.GEARGRID.COM </small>		<small> PART NO. 400020 </small>	<small> TITLE SECUREBOX, STEEL </small>
<small> PART NO. 400020 </small>	<small> QTY. 1 </small>	<small> UNIT EACH </small>	<small> REV. 01 </small>
<small> DO NOT SCALE DRAWING </small>			<small> SHEET 1 OF 1 </small>