

WALL MOUNT HOSE DRYING SYSTEM

REV	DESCRIPTION	DATE
01	INITIAL RELEASE	09/28/2020

STEP 1:
Locate a clear 26' long area of wall space for mounting unit. Unpack unit and lay cardboard from shipping carton down to protect unit's paint. The unit should include 20 shelves, 6 horizontal tubes, 3 left side frames, 3 right side frames and the hardware box.

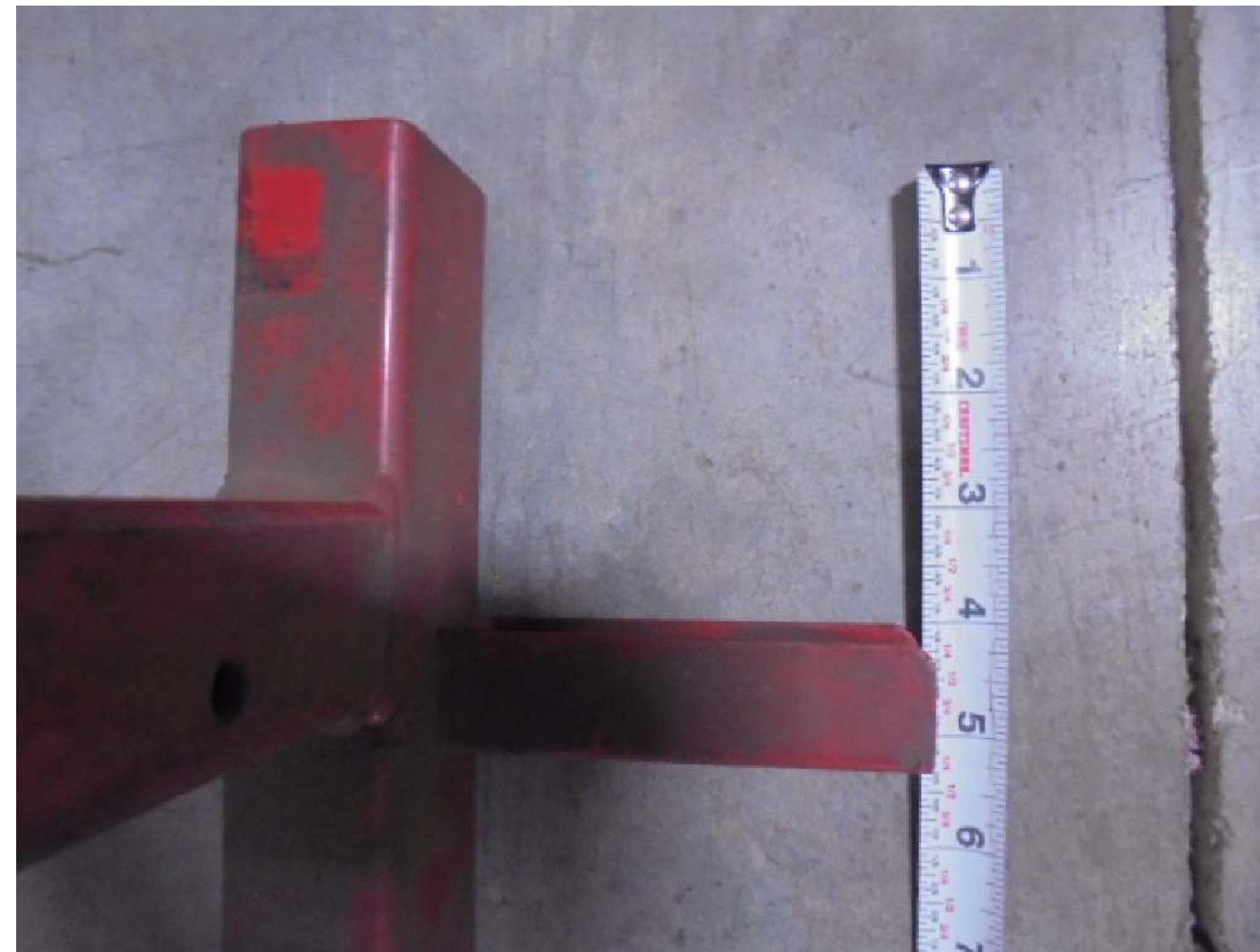
STEP 2:
Measure up from the floor and place marks on the wall at each end of the 26' proposed mounting area at the following heights: 21", 24" & 27".

STEP 3:
Snap a 26' long horizontal chalk line at each of the three marks on the wall.

STEP 4:
From the left end of the lower chalk line, measure horizontally and mark points on this chalk line at 1-1/2" and 62" which would be the inside dimension of the first assembly to be placed up. Drill 3 holes approximately 15" apart on the chalk line between these marks. **ACTUAL HOLE POSITIONS MAY VARY AS FASTENERS MUST LINE UP WITH A SOLID STRUCTURAL MEMBER SUCH AS STUDS OR THE SOLID CENTER WEB OF CONCRETE BLOCKS.** 3 of the "Z" mounting brackets are to be fastened loosely in the holes on the chalk line.



STEP 5:
Layout 1 left side frame and right side frame as shown above.

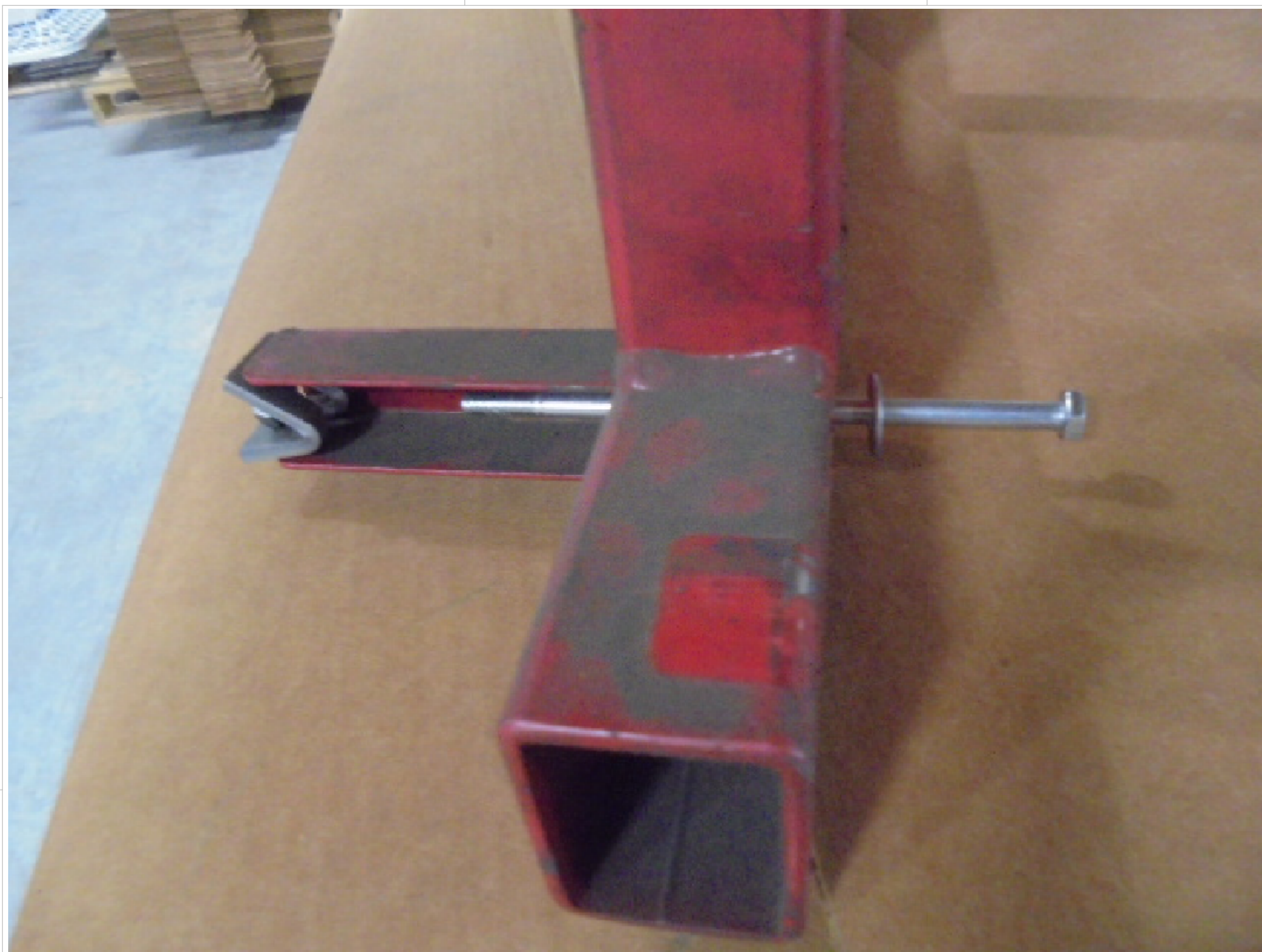


LEFT SIDE FRAME SHOWN - MEASUREMENT IS FROM THE TOP OF THE FRAME.

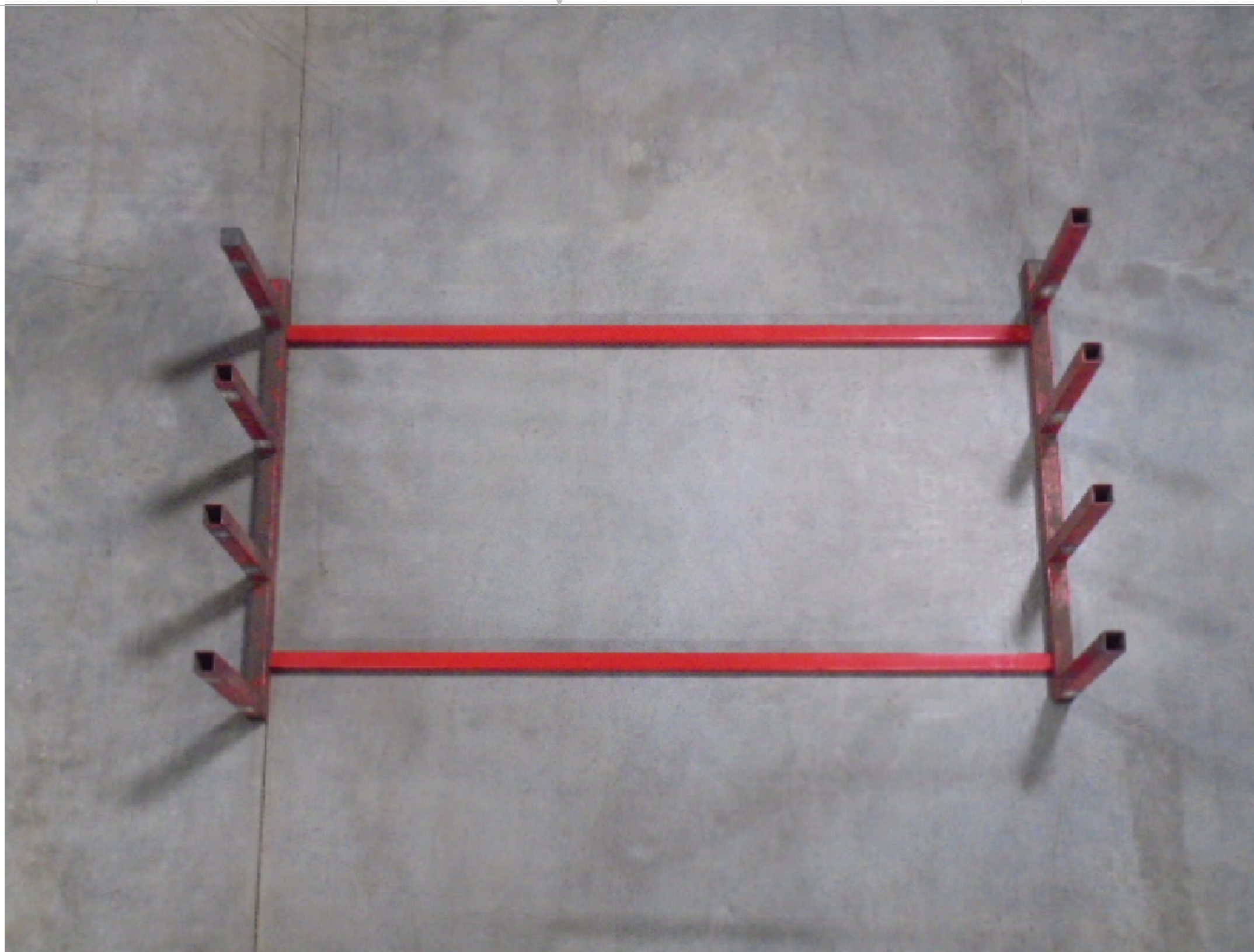


RIGHT SIDE FRAME SHOWN - MEASUREMENT IS FROM THE TOP OF THE FRAME.

GEARGRID <small>PROPRIETARY AND CONFIDENTIAL</small> <small>THE INFORMATION CONTAINED IN THIS DRAWING IS THE SOLE PROPERTY OF GEARGRID CORPORATION. ANY REPRODUCTION IN PART OR AS A WHOLE WITHOUT THE WRITTEN PERMISSION OF GEARGRID CORPORATION IS PROHIBITED.</small>	<small>NAME</small> LUKE B.	<small>DATE</small> 09-28-2020	TITLE: WALL MOUNT, HOSE DRYING SYSTEM, INSTALL
	<small>ENGINEER</small> UNLESS OTHERWISE SPECIFIED: DIMENSIONS ARE IN INCHES TOLERANCES: ANGLE MACHINED ±.5" ANGLE FORMED ±1" TWO PLACE .XX ±.03 THREE PLACE .XXX ±.010 HOLE Ø ±.005	<small>SIZE</small> D	
<small>INTERPRET DIM AND TOLERANCE PER ASME Y14.5M-1994</small> <small>THIRD ANGLE PROJECTION</small>	<small>MATERIAL</small> FINISH	<small>REV</small> 01	DO NOT SCALE DRAWING SHEET 1 OF 3



STEP 6:
Install bolt, washer and wedge nut as shown above to the four U-Channels on the frames. 2/side frame. Do not tighten the bolts at this time.



STEP 7:
Install two of the horizontal tubes over the U-Channels on the side frames as shown above. Push frames together to close the gaps on the tubes. Tighten the four bolts, do not over tighten.

STEP 8:
Lift this assembly up and place on the wall using z-mounting brackets previously installed to hold the bottom horizontal tube to the wall. Position the left end of this unit at the desired starting point. Finish mounting of this unit by installing three z-mounting brackets on the top horizontal tube aligning them with the bottom z-brackets. Tighten the z-mounting brackets enough to securely hold unit to the wall.

STEP 9:
Measure horizontally 60-1/2" from the right side of the mounted unit and mark this point on the second chalk line. The next unit will mount on the second chalk line again using steps 4 through 8.

STEP 10:
Repeat step 9 for the third mounted unit, which is mounted on the top chalk line. Using steps 4 through 8.



STEP 11:
The drying shelves can now be mounted to the frame assemblies that are attached to the wall. **SHELVES ARE POSITIONED WITH THE ROUND TUBE EDGE FACING OUT AND THE LIP IN THE BACK POINTING UP.** Bolt the shelves to the units using the 1/4" x 2-1/4" bolts, lock washers and nuts. Do not tighten bolts until all shelves have been installed.

STEP 12:
Securely tighten all shelf bolts. Firmly tighten all z-mounting bracket fasteners. Install plastic tubing end plugs. Load your Hose.

