

SUFFOLK / MIAMI ASSEMBLY

The following steps below will walk you through the assembly process of your new Miami or Suffolk unit. Resources needed will be:

Two people

3/8" drive ratchet, 7/16" and 9/16" sockets

floor space to lay out parts

rubber mallet, Allen wrench set, drill

Step 1: Set up the base of the unit as shown in the photo below.

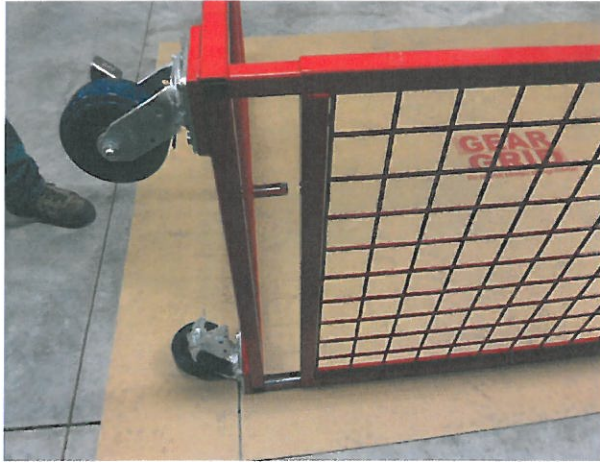


Step 2: Install casters as shown below. Use 3/8-16 x 5/8" qty-3 per caster (Use the 1/4-20 x 6-1/2" with a washer on the corners that align with the channels). Install the wedge nuts in the orientation shown. For the middle channel use a 1/4-20 x 5-1/2" bolt and washer. **Do not tighten the wedge nuts at this point.**



SUFFOLK / MIAMI ASSEMBLY

Step 3: Start the installation of the side panels as shown, do not push them all the way down on the channel at this point. Ensure the horizontal wires are facing to the right (one to the inside of the unit and one to the outside of the unit). This side panel orientation is important for shelf fit. If your unit has doors ensure the hinges are to the inside of the unit. Start the center tube as shown with the pierced holes facing the sides.



UNIT WITH DOORS, HINGES POSITIONED AS SHOWN.

Step 4: Install the back grid with the badge at the top of the unit facing in as shown. The long wires on the grid will slide into the center tube holes and the side panel holes. Once the two back grid panels are installed slide the sides with the back grid panels down onto the base. Tighten the 5 wedge nut bolts.



SUFFOLK / MIAMI ASSEMBLY

Step 5: Install the 1/4-20 x 5-1/2" bolts, washers, and wedge nuts to the top frame of unit. Install the top to the rest of the unit and tighten bolts. Stand the unit up on its casters and square up the unit. Position gussets on all four corners on back side of unit as shown below and fasten using the supplied self tapping screws.

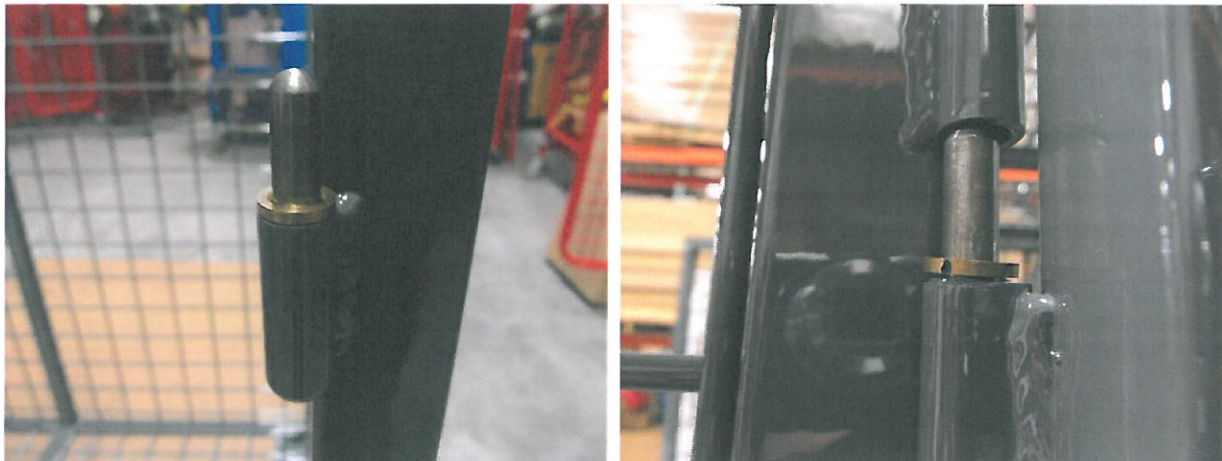


SUFFOLK / MIAMI ASSEMBLY

Step 6: Install your shelves in desired location. When hooked to the side panels the hook on the left side of shelf must sit behind the vertical wire and the right shelf hook must sit in front of the vertical wire as shown. If you have a unit with doors install the shelves before the doors.



Step 7: Installing doors. Install the brass bushings to the hinges on the sides as shown below. Install the door to each side over the hinge pins as shown.



SUFFOLK / MIAMI ASSEMBLY

Step 8: Install the door hasp to each door but do not tighten. Shut the door to line up hasp and then tighten hardware.



Step 9: Install 11 gauge black caps to the base and 16 gauge caps to the doors.



SUFFOLK / MIAMI ASSEMBLY

