

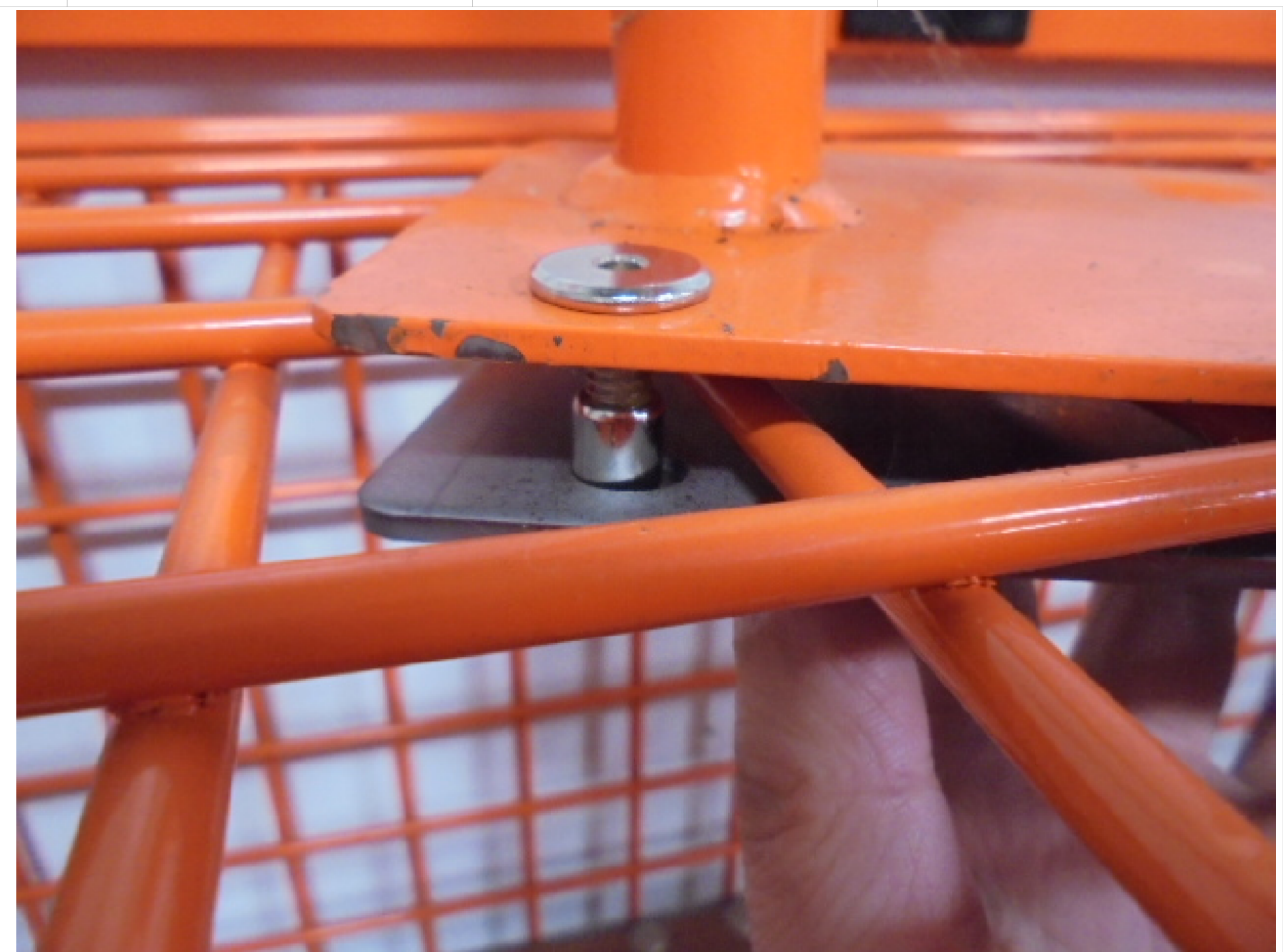
STATIONARY GEAR-TOPPER, INSTALL



STEP 1:
POSITION GEAR HOLDER IN DESIRED LOCATION. ENSURE HOLES ARE POSITIONED TO LOCK HOLDER IN PLACE ONCE FASTENERS ARE INSTALLED. (HOLES ON OPPOSITE SIDES OF WIRE TO HOLD IN PLACE)



STEP 2:
GATHER BACKING PLATE AND HARDWARE



STEP 3:
LINE UP BACKING PLATE AND INSTALL THE HARDWARE. TIGHTEN HARDWARE



STEP 4:
INSTALL INCLUDED CAP PLUGS



STEP 5:
LOAD YOUR GEAR

GEARGRID	NAME	DATE	TITLE:
	ENGINEER	LUKE B.	01-19-2021
<small>PROPRIETARY AND CONFIDENTIAL THE INFORMATION CONTAINED IN THIS DRAWING IS THE SOLE PROPERTY OF GEARGRID CORPORATION. ANY REPRODUCTION IN PART OR AS A WHOLE WITHOUT THE WRITTEN PERMISSION OF GEARGRID CORPORATION IS PROHIBITED.</small>			
<small>UNLESS OTHERWISE SPECIFIED: DIMENSIONS ARE IN INCHES TOLERANCES: ANGLE MACHINED ±.5° ANGLE FORMED ±1° TWO PLACE .XX ±.03 THREE PLACE .XXX ±.010 HOLE Ø ±.005</small>		SIZE	REV
<small>INTERPRET DIM AND TOLERANCE PER ASME Y14.5M-1995</small>		D	01
<small>THIRD ANGLE PROJECTION</small>		PART NO. SHEET 1 OF 1 DO NOT SCALE DRAWING	