

# GEARGRID STATION WAGON ASSEMBLY INSTRUCTIONS

## Step 1:

Place the main frame on a work area on cardboard or carpet to protect the finish. Install the front and rear axles as shown in photo 1 using supplied hardware (5/16 x 2" bolt with washers both sides and standard 5/16" hex nut). Orient the front axle with the lube holes facing the front for easy access (photo 1b).

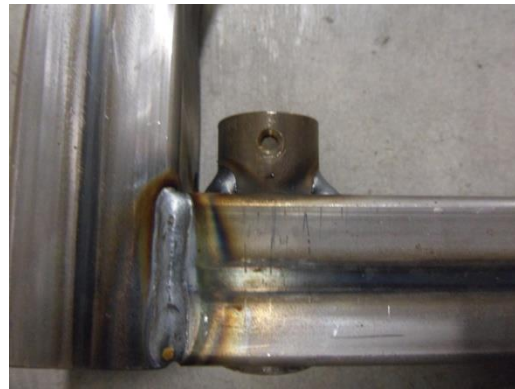
## Step 2:

Place the axle supports in position as shown in photo 2. Use the supplied 5/16" x 1" bolt along with 2 washers and a 5/16" hex nut to loosely fasten the center location where the two supports overlap. Next, loosely fasten the support to the rear axle using the supplied 5/16" x 1" bolt, 2 washers, and a hex nut where the support lines up under the rear axle.

(Photo 1a)



(Photo 1b) every 3 months use graphite dry lube in steering tube holes.



(Photo 2)



# GEARGRID STATION WAGON ASSEMBLY INSTRUCTIONS

## Step 3:

Install the steering yoke as shown in photo 3 using the supplied hardware.

**#1 BOLT:** 5/16" x 2-1/2" with 1 nylon washer between axle hoop and yoke strap

two standard 5/16" washers on each end with 5/16" nylock nut

**#2 BOLT:** 5/16" x 2-1/2" with 1 nylon washer between axle support and yoke strap

two standard 5/16" washers on each end with 5/16" nylock nut

**#3 BOLT:** 5/16" X 1-1/4" with two nylon washers 1 between each steering link arm

two standard 5/16" washers on each end with 5/16" nylock nut

(Photo 3)



# GEARGRID STATION WAGON ASSEMBLY INSTRUCTIONS

## **STEP 4:**

Install wheel axles as shown in (photo 4)

(Photo 4)



## **STEP 5:**

Connect steering straps to wheel axles as shown in photo 5 using the supplied hardware

5/16" x 1" bolt, 2 standard washers, 1 nylon washer between the wheel axle plate and the steering strap, 5/16" nylock nut. TIGHTEN ALL STEERING BOLTS AND THEN BACK OFF A 1/4 TURN

(Photo 5)



# GEARGRID STATION WAGON ASSEMBLY INSTRUCTIONS

## STEP 6:

Install the wheels as shown and use a 3/4" wrench and a rubber hammer to install the push nuts. Repeat for the other three tires. Tighten all bolts that have standard hex nuts. Flip the cart over.

(Photo 6)



## STEP 7:

Install the push nuts over the steering arm shafts as shown in photo7

(Photo 7a)

(Photo 7b)



# GEARGRID STATION WAGON ASSEMBLY INSTRUCTIONS

## STEP 8:

Insert basket hooks. Use the bent sheet metal piece pictured in photo 8 along with a 5/16" x 1" bolt and two 5/16" washers. Orientate and install as shown in photo 9.

(Photo 8)



(Photo 9)

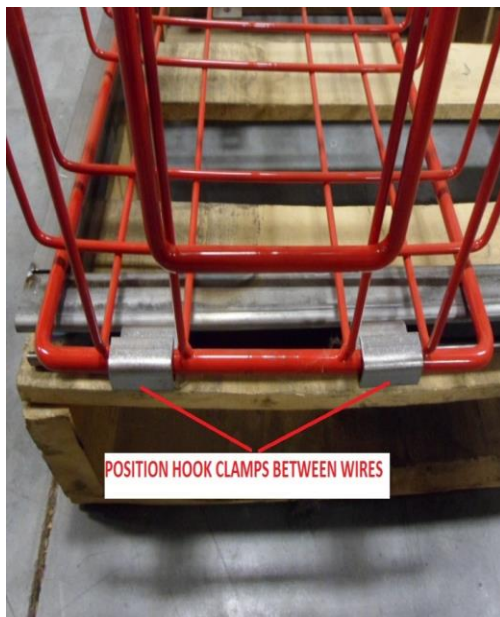


## STEP 9:

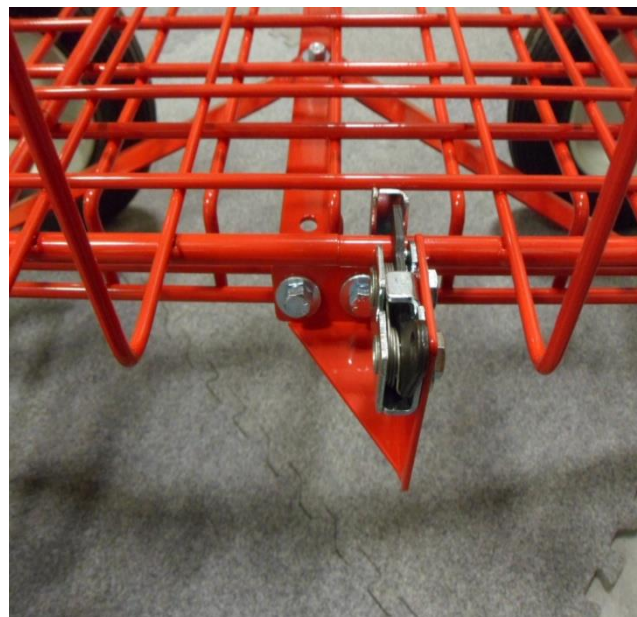
Line up the hook clamps as shown in photo 10 so the clamps sit between the wires. Center the rotaray latch on the other side as shown in photo 11.

Photo 10: 5/16" x 1" bolts with 5/16" washers, Photo 11: 5/16" x 1" bolts 5/16" washers.

(Photo 10)



(Photo 11)



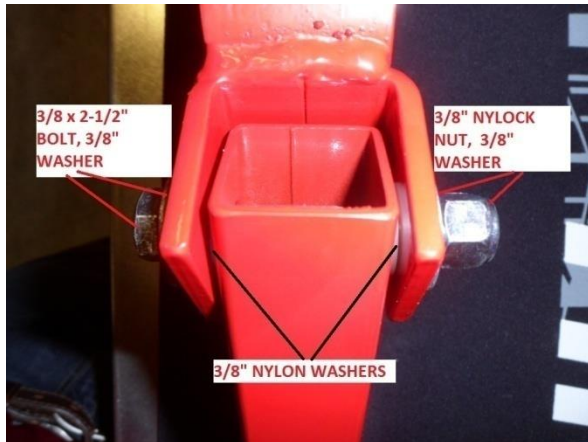
# GEARGRID STATION WAGON ASSEMBLY INSTRUCTIONS

## STEP 10:

Install cart handle as shown in photo 12 & 13 using the supplied hardware.

(Photo 12) 3/8 X 2-1/2" bolt, 3/8" washer, 3/8" nylon washers, 3/8" nylock nut

(Photo 13) 5/16 x 6" bolt, 5/16" washers, 5/16" nylock nut, vinyl handle covers



# GEARGRID STATION WAGON ASSEMBLY INSTRUCTIONS

## A-FRAME OPTION

### STEP 1:

Bolt the panels to the A-Frame supports as shown below. Keep the wires flush to the outside on each panel. Use the supplied hardware:

5/16 x 2" bolts with 5/16" washers on each side along with 5/16" nuts.



### STEP 2:

Secure the tops of the A-Frame together using the supplied bracket and hardware. Install the plastic caps to the ends of the tubes.

5/16 x 3/4" bolts, 5/16" washers, 5/16" nuts



# GEARGRID STATION WAGON ASSEMBLY INSTRUCTIONS

## **STEP 3:**

Place the A-Frame on top of the cart frame and position clamps to secure the A-Frame.

**NOTE: USE THE SUPPLIED U CLAMPS TO SECURE THE A-FRAME FROM SHIFTING.**

