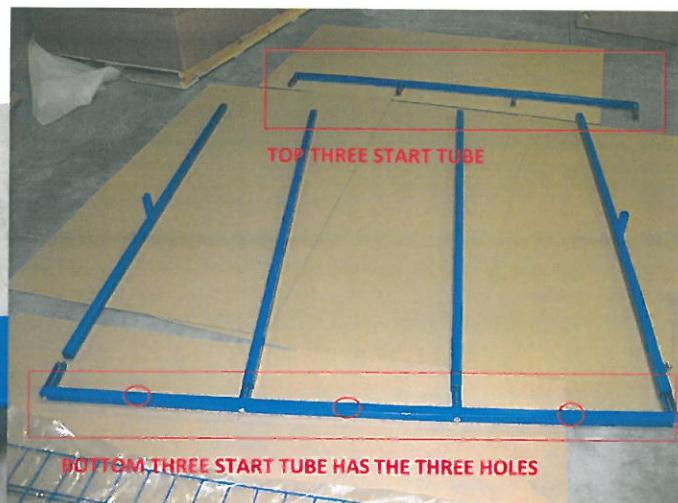
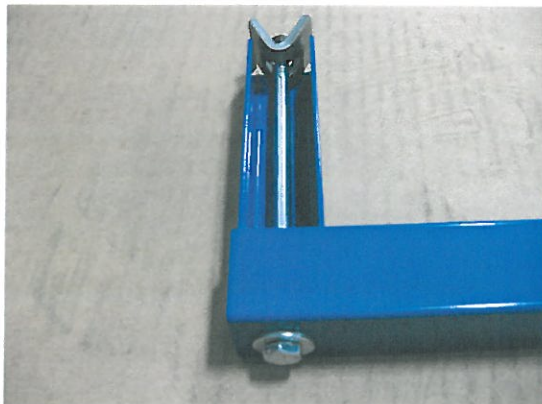


6' WIDE, MOBILE SLINGER TOOL GRID #450025



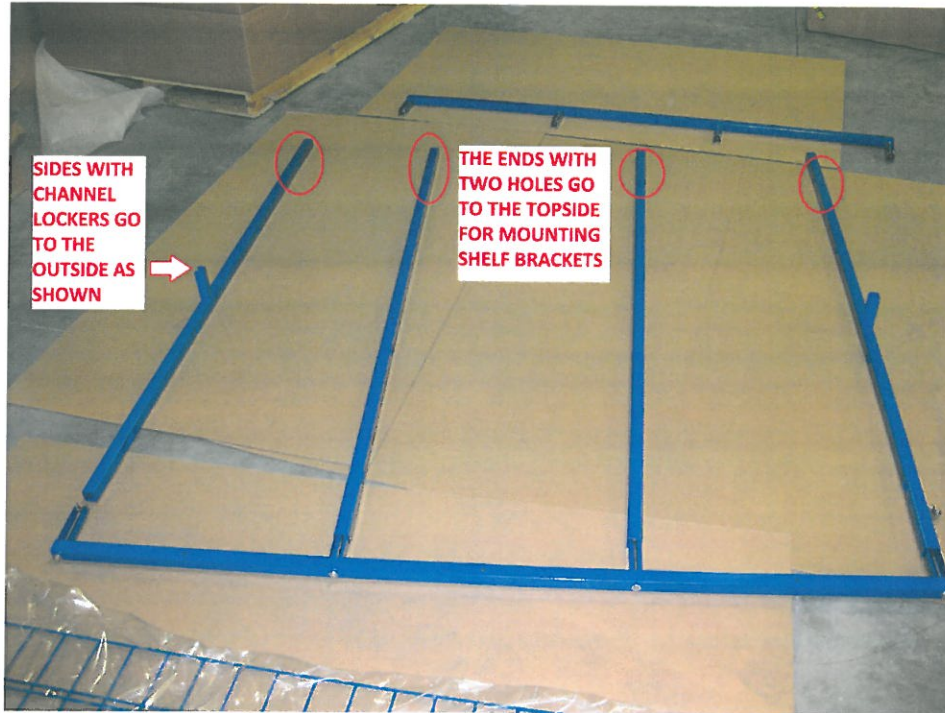
Find a large clear area and lay down cardboard to protect the finish from getting scratched.

Step 1: Install 1/4-20 x 5-1/2" bolts along with 1/4" flat washer and wedge nuts through the 3- Start tubes and channel lockers as shown in the photo below. Note the orientation of the wedge nut it must be positioned as shown in the photo, Do not tighten at this point. There is 8 bolts, washers and wedge nuts.



6' WIDE, MOBILE SLINGER TOOL GRID #450025

Step 2: Lay out Top and Bottom Three Start tubes and start vertical tubes into the channel lockers on the three start tubes as shown in the photo's below.



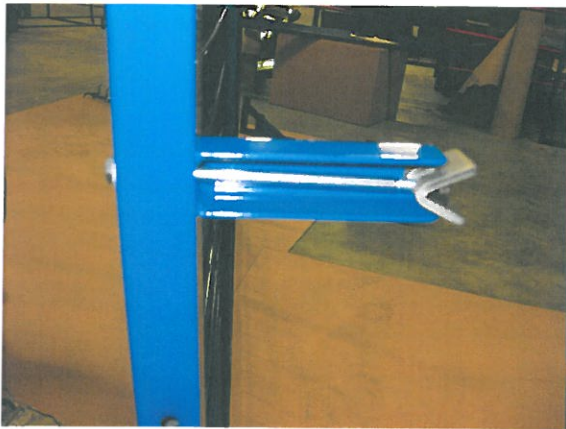
Step 3: Insert back panels so the long wires insert into the pierced holes in the vertical tubes as shown in the photo's below.



Step 4: Install top three start tube and press in so it is flush, do the same with the bottom three start tube and now tighten them. Do not exceed 12 ft. lbs. of torque

6' WIDE, MOBILE SLINGER TOOL GRID #450025

Step 5: Remove tube caps in the Slinger Unit so it can be installed. Install a 1/4-20 x5-1/2" bolt along with a wedge nut and washer to each of the two vertical tubes with channel lockers. With two people slide the units channel lockers into the tubes on the slinger unit. Make sure the three start tube with the 3 holes is on the bottom. Once in place tighten the bolts to hold unit in place.



6' WIDE, MOBILE SLINGER TOOL GRID #450025

Step 6: Drill 5/16" holes through the slinger tubes (using the five holes that are in place, the 2 center vertical tubes and the three holes in the bottom of the three start tube). Locations are shown in the photo below. Once the holes are drilled install 1/4-20 x 3" bolts with washers and nylock nuts Tighten these fasteners right away.



Step 7: Install 5/16 x 3" bolts and washers to bracket as shown in the photo's below and install to the top of the unit as shown with a washer and nylock nut on the other side. Install the remaining three brackets the same way.



6' WIDE, MOBILE SLINGER TOOL GRID #450025

Step 8: Install the top shelf as shown in the photo and install 1/4-20 x 2" bolts with a washer on the top and the bottom side along with a nylock nut. Two sets of bolts and washers per bracket.

