

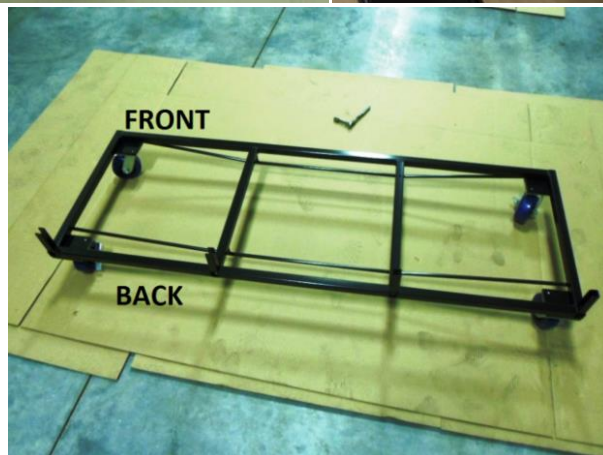
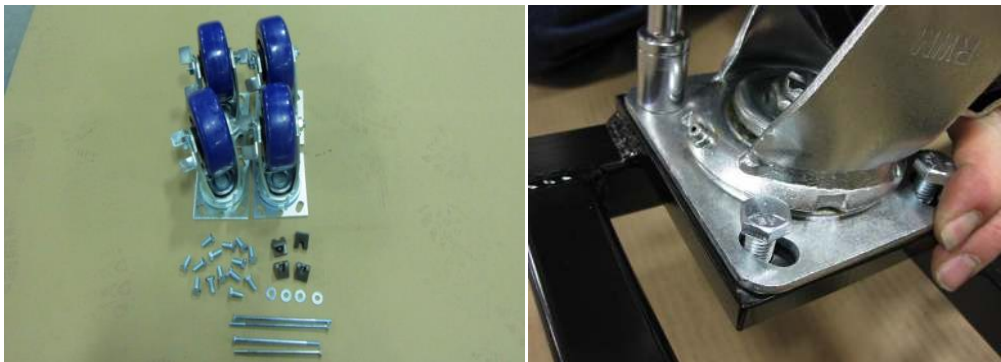
# SLINGER WORK STATION

STEP 1: Lay out a large piece of cardboard on the floor to protect the product from being scratched.

STEP 2: Locate the Slinger base (p/n 440044) set the base so the caster wheel plates are facing up.



STEP 3: Locate (4) Wedge Nuts (p/n 401006), (2) 1/4-20x5-1/2" Bolts (p/n 401004), (2) 1/4-20x6-1/2" Bolts (p/n 500169), (4) 1/4" flat washers (p/n 401005) (14) 3/8-16x5/8" (p/n500119) (4) casters (p/n 401101). Grab (2) caster wheels and (8) 3/8" bolts and attach caster wheels to the front of Slinger base only.



# SLINGER WORK STATION

STEP 4: Take the last (2) caster wheels and the remaining (6) 3/8" bolts along with (2) 1/4-20x6-1/2" bolts, (2) wedge nuts, and (2) 1/4" flat washers and attach the caster wheels to back of Slinger base. Note: the (2) 6-1/2" bolts, washers, and wedge nuts will be set into the corner U-channel/spuds of the base. See photo below. (All wedge nuts must be in this orientation)



STEP 5: Flip the base over onto the casters as shown in the photo below. Next take (2) 1/4-20x5-1/2" bolts, (2) 1/4" washers, and (2) wedge nuts, and insert the bolts and washers through the bottom side of the base and thread wedge nuts into the U-channel/spuds as shown in the photo below.



# SLINGER WORK STATION

STEP 6: Side installation. When installing sides, (P/N 440043, 440048, 440049, and 440050) just start the side over the locker U-channel/spuds of the base as shown in the photo below. This will ease the installation of the back panels (Do not exceed 13lbs of torque because deformation of material may occur). Note: If your Slinger comes with a Tool Grid attachment, your Slinger will not have back grid panels you will then proceed to step 8



(Slinger w/o tool grid attachment)



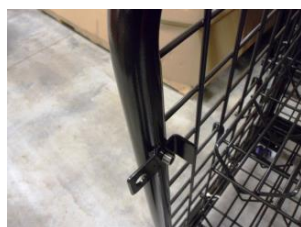
(Slinger with tool grid attachment)



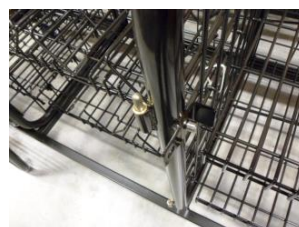
THE PHOTOS BELOW INDICATE THE ORIENTATION OF THE SIDES IF YOU WERE LOOKING FROM THE FRONT OF UNIT (LEFT TO RIGHT)



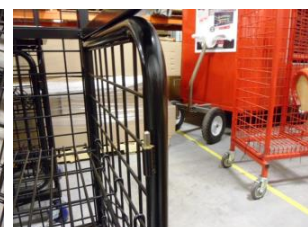
440043 STANDARD



440048 HASP



440049 HINGE/HASP



440050 HINGE

# SLINGER WORK STATION

STEP 7: Locate 3 Slinger back panels p/n 412600, and install by lining up the long horizontal wires to the holes in the sides square tube as shown below. The horizontal wires should be on the inside of the unit. Once all the back panel grids are installed as shown below you can now set the sides and back panels down flush to the top of the base

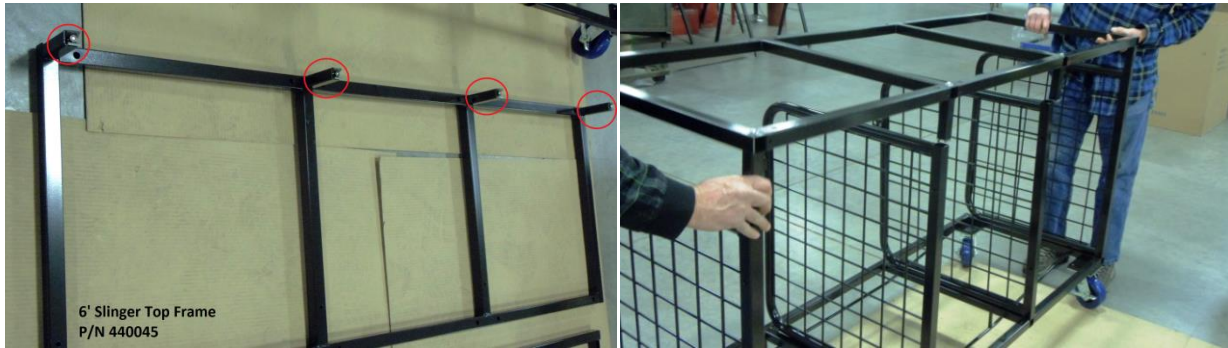


STEP 8: Locate (4) #14 sheet metal screws (p/n 401018) and start them into the 4 predrilled holes on the bottom of the horizontal base tubes (These screws will tighten all sides to base). You can now tighten all Slinger base hardware.



# SLINGER WORK STATION

STEP 9: Slinger top frame (without tool grid attachment) installation. Grab Slinger top frame p/n 440045, and thread (4) 1/4-20x5-1/2" bolts, (4) 1/4" washers and (4) wedge nuts into top frame U-channel/spuds (same process as Slinger base). Install the top frame of the unit as shown in the photo below. The top frame locker channel/spuds will slide down inside the side square tubes. Then tighten bolts. (Do not exceed 13lbs of torque)

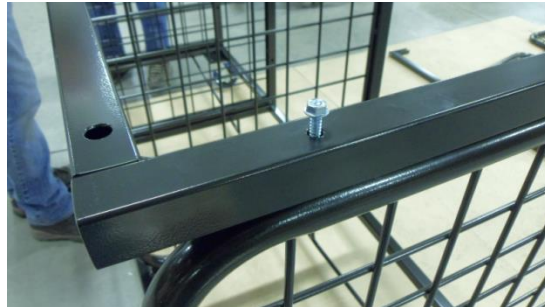


(Note: If your Slinger comes with a Tool Grid attachment you will not install bolts, washers and wedge nuts into Slinger top frame U-channel/spuds at this time. Photo below indicates where bolts, washer and wedge nuts will need to go instead once tool grid attachment is set in place. (Please see tool grid attachment assembly instructions)



# SLINGER WORK STATION

STEP 10: Install (4) #14 sheet metal screws p/n 401018 into the (4) pre-drilled holes of the Slinger top frame.



STEP 11: Shelf Installation. Install shelves so the hooked wire is placed over the horizontal wire as shown in the photo below.



STEP 12: Door Installation. Locate 4 brass bushings p/n 401008 and install on the hinges as shown in the photo below. Install the doors p/n 422108 by lining up male and female hinges and drop door into place as shown on the photo below.



# SLINGER WORK STATION

STEP 13: Door latch assembly installation. Locate latch assembly p/n 401107 and (2) 1/4-20x3/8" screws p/n 401105. Install latch assembly as shown below only finger tight then close door for fine adjustment, then tighten screws.



STEP 14: Work station installation. The photo below shows the relief cuts for the (4) sheet metal screw heads on the top of the Slinger top frame. The relief cuts will be placed directly over the screw heads. Set the work station into place



# SLINGER WORK STATION

STEP 15: Install (12) 5/16-18x2" bolts p/n 504060, and (12) 5/16" flat washer p/n 504025 through the bottom of the Slinger top frame and into the threaded inserts of the work station.



**(Note: If your Slinger comes with a Tool Grid attachment you will need to attach Slinger work station before attaching Slinger Tool Grid attachment, otherwise bolts will not line up correctly to work station inserts.)**

STEP 16: Plug Installation. Locate (4) square plugs 16 gauge p/n 401007 and (4) square plugs 11 gauge p/n 401102. Install the 16 gauge plugs on the top square tube openings and install the 11 gauge plugs on the bottom frame portion of the unit.

