

GEAR GRID

ASSEMBLY INSTRUCTIONS FOR THE SCBA MOBILE BOTTLE CART

Tools Required: 9/16 wrench, adjustable wrench and pliers.

Parts Included: (1) Upright Assembly (long), (1) Horizontal Assembly (short), (2) Wheels, Axle and Hardware.

Step 1: Unpack components and flatten carton for use during assembly to protect Rolling Rack from floor.

Step 2: Place upright assembly in a horizontal position with the handle touching the floor. Place the horizontal assembly on top of the upright assembly. See Photo #1.



Photo 1

Step 3: Line up holes in tube of horizontal assembly with holes in tabs on upright assembly. Place a flat washer on the 3/8" x 2-1/4" bolt and insert into hole in tube. Before pushing bolt into tab, insert the white plastic washer between the tube and the tab. See Photo 2. Push bolt through tab, place another flat washer on bolt and tighten the lock nut securely. Do not over-tighten this bolt. Assembly should pivot freely but not be loose. Fold open horizontal assembly and line up the second set of holes. Place a flat washer on the 3/8" x 2-1/4" bolt and insert into hole, Push bolt through tab, install another flat washer on bolt and tighten the lock nut securely. See photo #2.

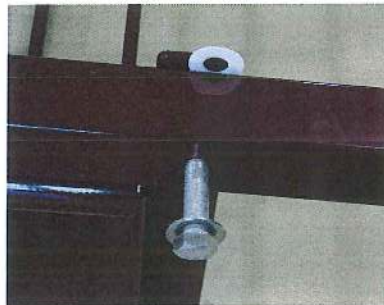


Photo 2

Step 4: Insert axle into sleeves on horizontal assembly. Place wheels on axle with air valve stems facing out and secure with cotter pins. See Photos #3&4.



Photo 3

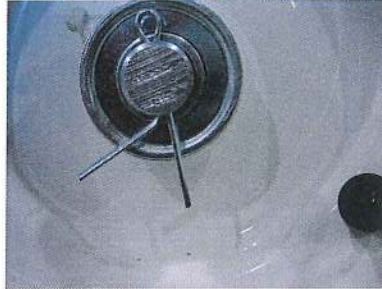


Photo 4

Step 5: Attach SCBA Bottle Shelves to the rack by mounting each shelf in its desired location on the back grid and securing it using two 1" cap screws, two flat washers and two bent washers. See photo #5 for a completed unit.



Photo 5

2008 GearGrid

Made in USA