

MOBILE DRYING RACK ASSEMBLY INSTRUCTIONS

CASTER INSTALLATION:

STEP 1: Place base of unit as shown below on carpet or cardboard to protect finish from scratching.

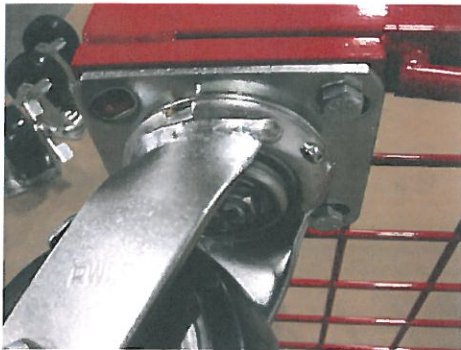


Caster installation will include:

(4) casters (12) 3/8-16 x 5/8" bolts (4) 1/4-20 x 6-1/2" bolts

(4) 1/4" flat washer (4) wedge nuts

STEP 2: Install each caster as shown below with three of the 3/8-16 x 5/8" bolts per caster, tighten these bolts now.



(leave hole vacant where the channel locker is located on base)

STEP 3: Install 1/4-20 x 6-1/4" bolts, (1 per caster) plus a 1/4" washer and a wedge nut as shown in the photo's below. Ensure the wedge nut is oriented as shown, do not tighten these yet.



MOBILE DRYING RACK ASSEMBLY INSTRUCTIONS

SIDE INSTALLATION

STEP 1: Start the first side with the horizontal wires on the inside of the unit, and start the other side with the horizontal wires on the outside. Slide the side tubes over the channel lockers as shown.



TOP INSTALLATION

STEP 1: Install bolts to the top portion of unit.

(4) 1/4-20 x5-1/2" bolts (4) 1/4" flat washers (4) wedge nuts

install as shown in the photo below, ensure the orientation of the wedge nuts. Do not tighten at this time.



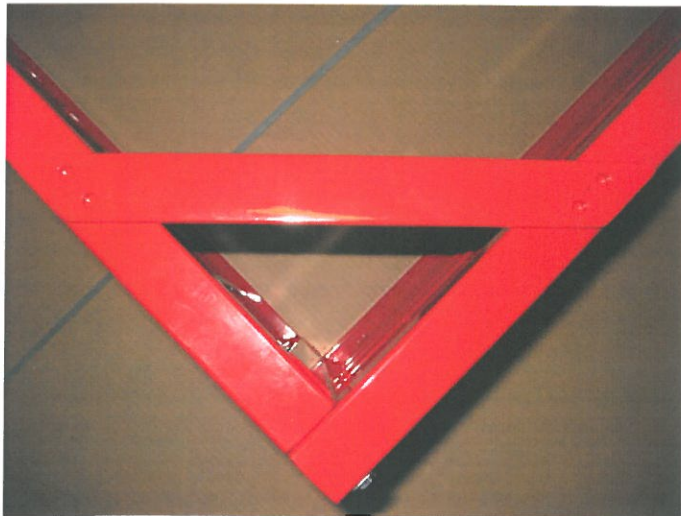
MOBILE DRYING RACK ASSEMBLY INSTRUCTIONS

STEP 2: Install top to the sides, slide channel lockers into the sides. Push the top and sides so they are tight against the base and tight against the top. Now tighten the four bolts in the base and the four bolts in the top to lock everything together. Do not exceed 13 FT. LBS., deformation of material will occur if exceeded.



GUSSET PLATE INSTALLATION

STEP:1 Square up gusset plate as shown in the photo below and use the 1/4 x 1" self drilling tapping screws. Install four on this side, flip unit and repeat process for the other side. Flip unit up on casters for the next step.



MOBILE DRYING RACK ASSEMBLY INSTRUCTIONS

HANGBAR INSTALLATION

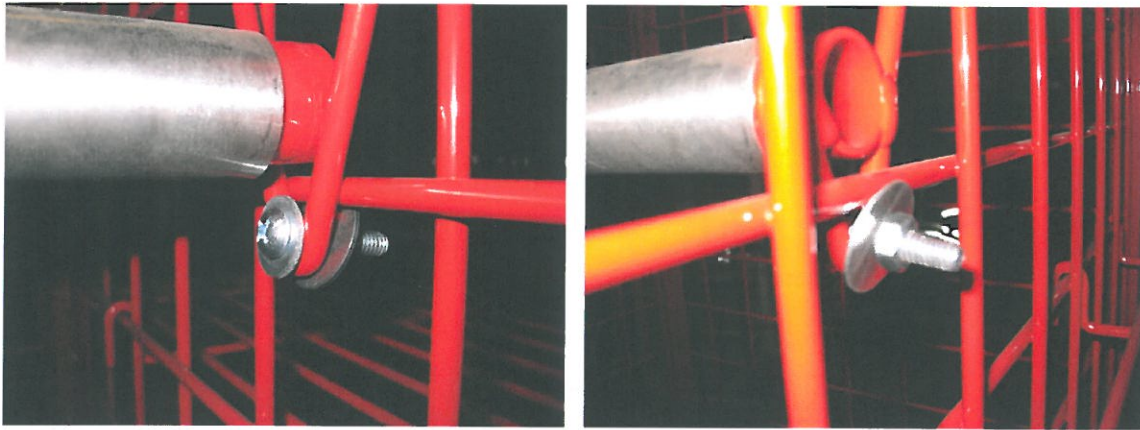
STEP 1: Install hangbar bracket to the side horizontal wire

STEP 2: Install the bar over the bracket tube.

STEP 3: Place the other bracket tube in the bar.

STEP 4: Install the unsupported end of bracket and bar to the other side horizontal wire.

STEP 5: Install hangbar retaining bolts and hardware (1) 1/4-20 x 1" machine screw, (1) 1/4" flat washer, and (1) 1/4 x 1" flat washer. The screw is to be fed through and bolted on the other side of the wire to keep the bracket from coming out of position when items are being removed. example is shown below.



STEP 5: Install bar support as shown in the photo below. The support will lock over the wires on the top panel of unit.



MOBILE DRYING RACK ASSEMBLY INSTRUCTIONS

INSTALL CAPS TO TOP AND BASE

16 Gauge caps for the top

11 Gauge caps for the base

