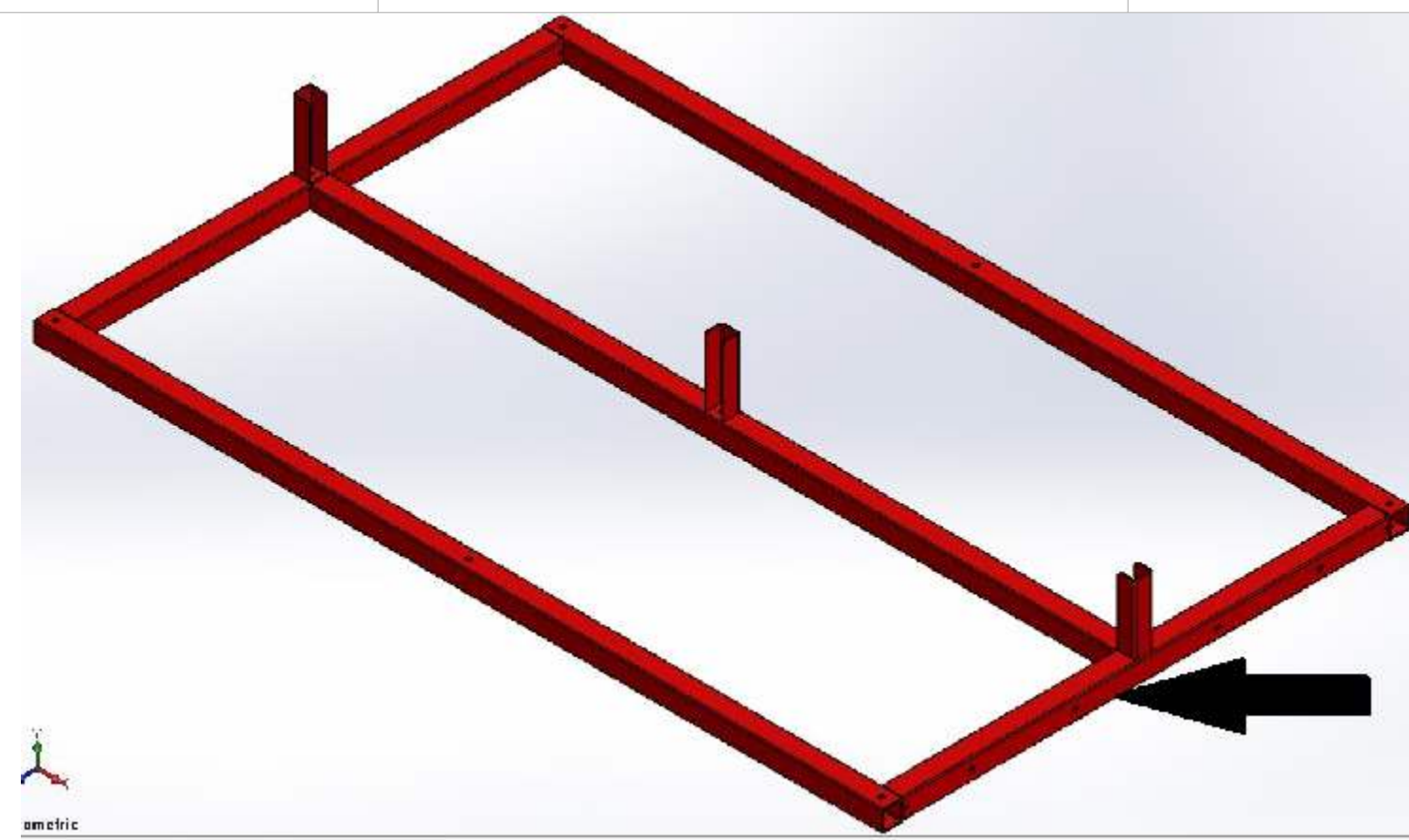


# ASSEMBLY INSTRUCTIONS: GEARGRID ISLAND LOCKER SYSTEMS

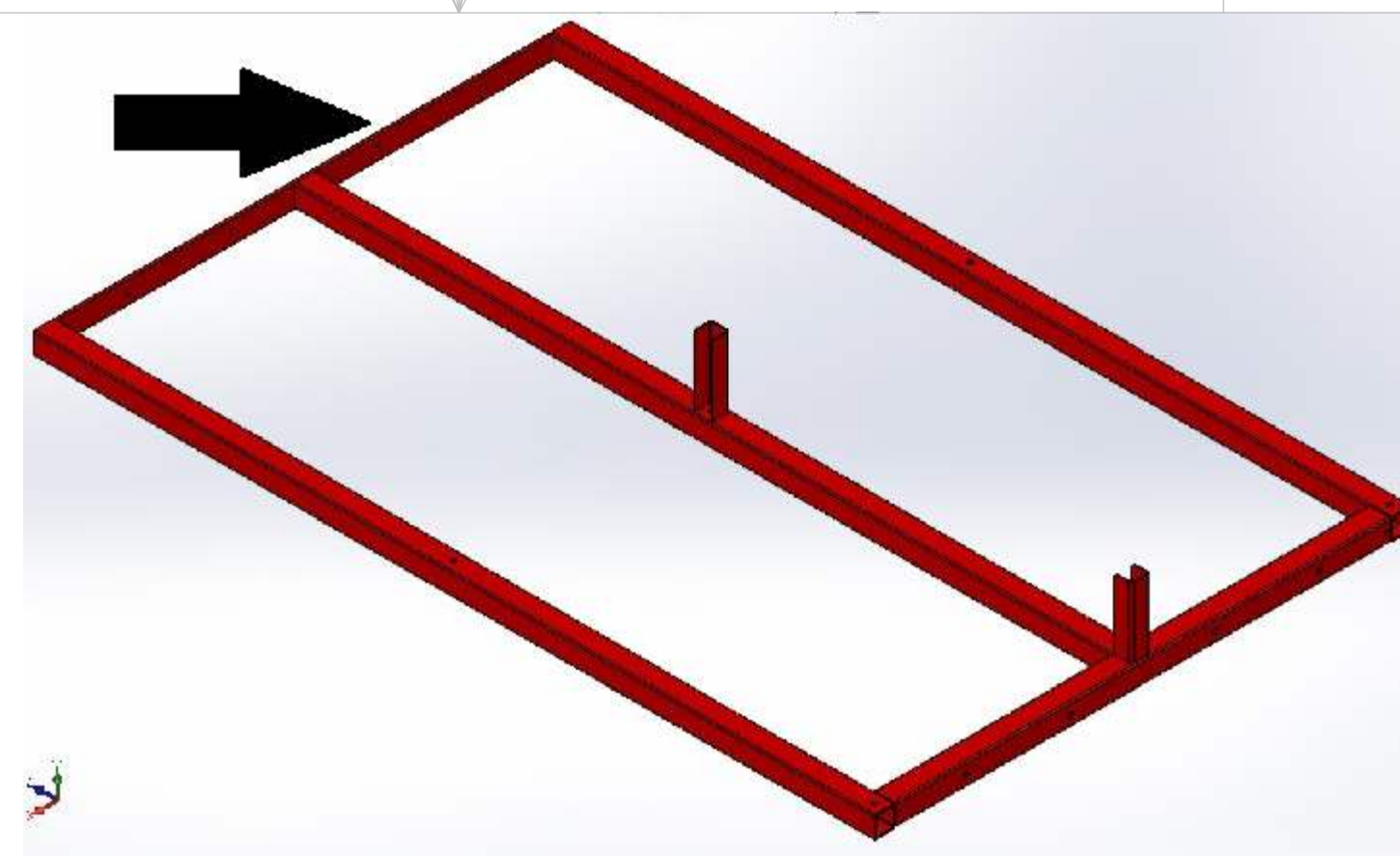
-RECOMMEND THREE INDIVIDUALS FOR ASSEMBLY

<b>GEARGRID</b> <small>PROPRIETARY AND CONFIDENTIAL</small> <small>THE INFORMATION CONTAINED IN THIS DRAWING IS THE SOLE PROPERTY OF GEARGRID CORPORATION. ANY REPRODUCTION IN PART OR AS A WHOLE WITHOUT THE WRITTEN PERMISSION OF GEARGRID CORPORATION IS PROHIBITED.</small> <small>INTERPRET DIM AND TOLERANCE PER ASME Y14.5M-1994</small> <small>THIRD ANGLE PROJECTION</small>	TITLE:	<b>GEARGRID, ISLAND LOCKERS</b>	
	SIZE	PART NO.	REV
DO NOT SCALE DRAWING		SHEET 1 OF 8	

**STEP 1:**  
CLEAR AN AREA AND LAY OUT  
CARDBOARD TO PROTECT THE PAINT.

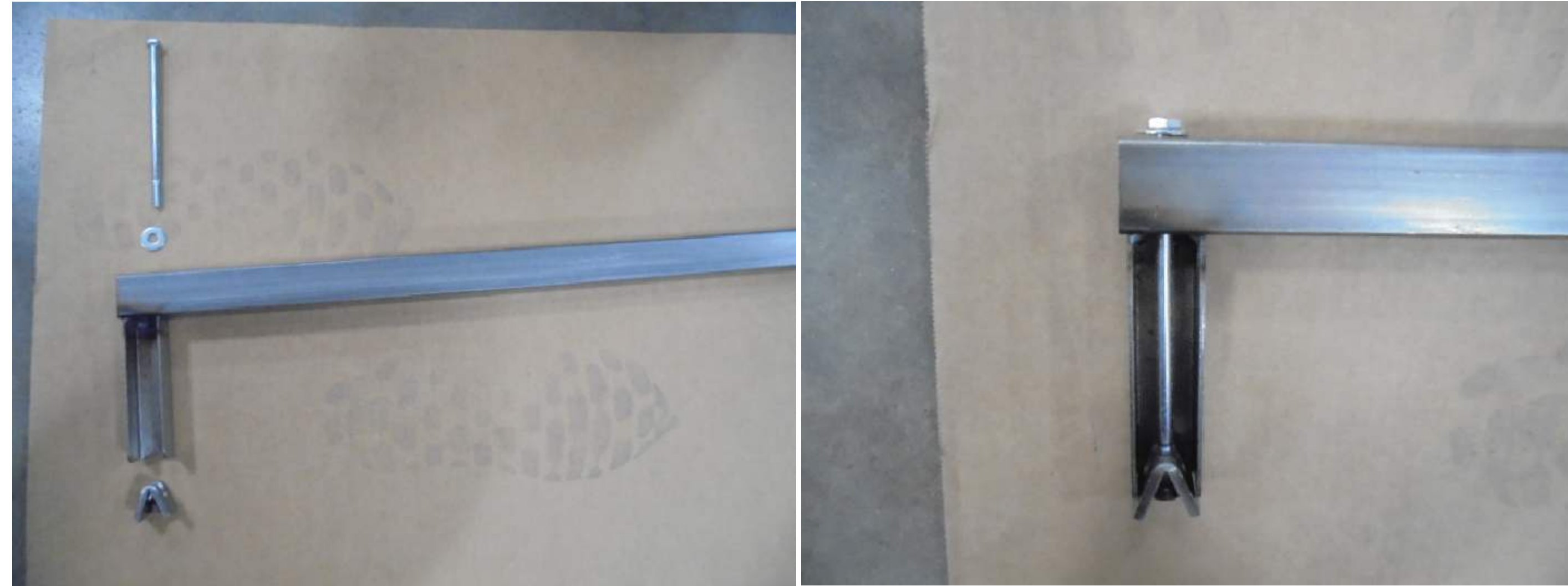
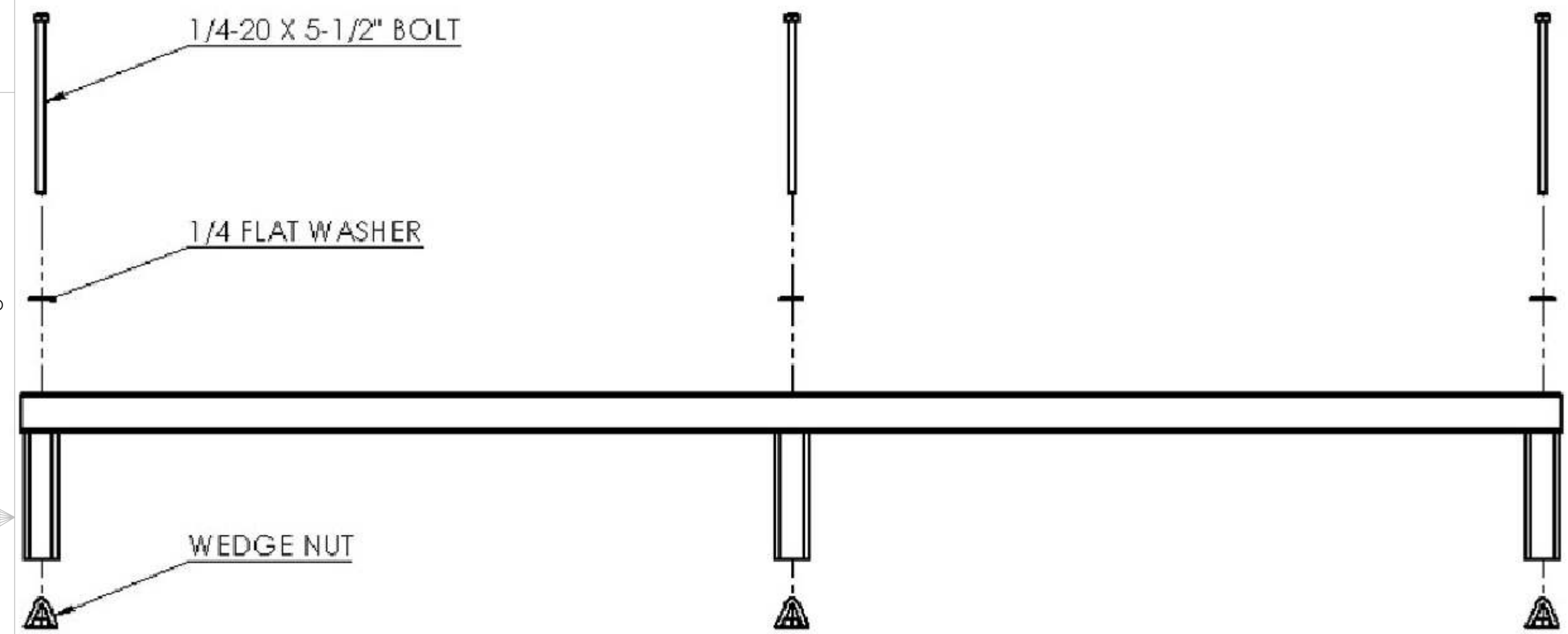
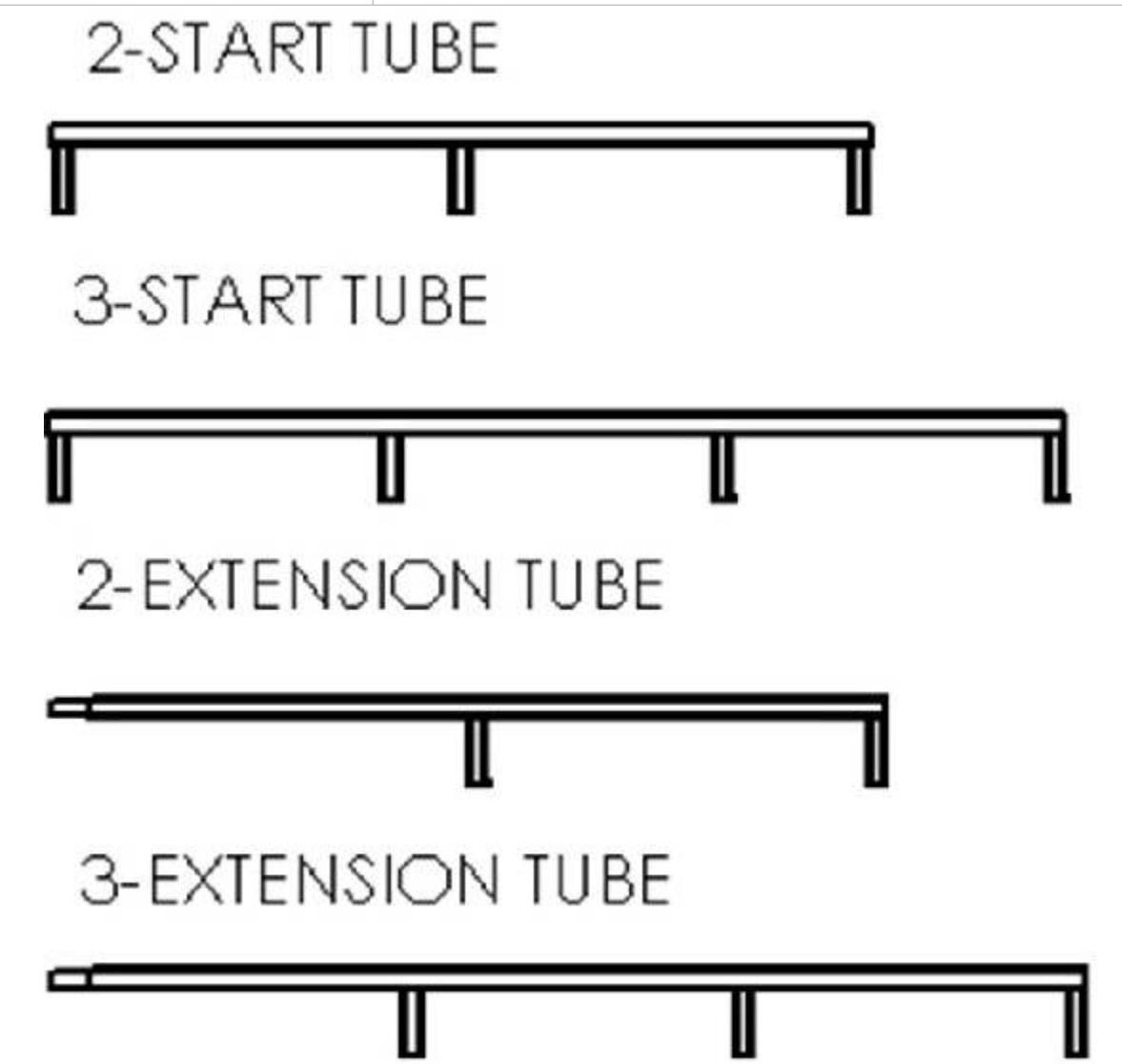


**BASE-START**  
THE BASE START WILL HAVE 1-1/4" TUBES ON BOTH ENDS WITH ONE END HAVING HOLES FOR BOLTING THE BASE EXTENSION TO.

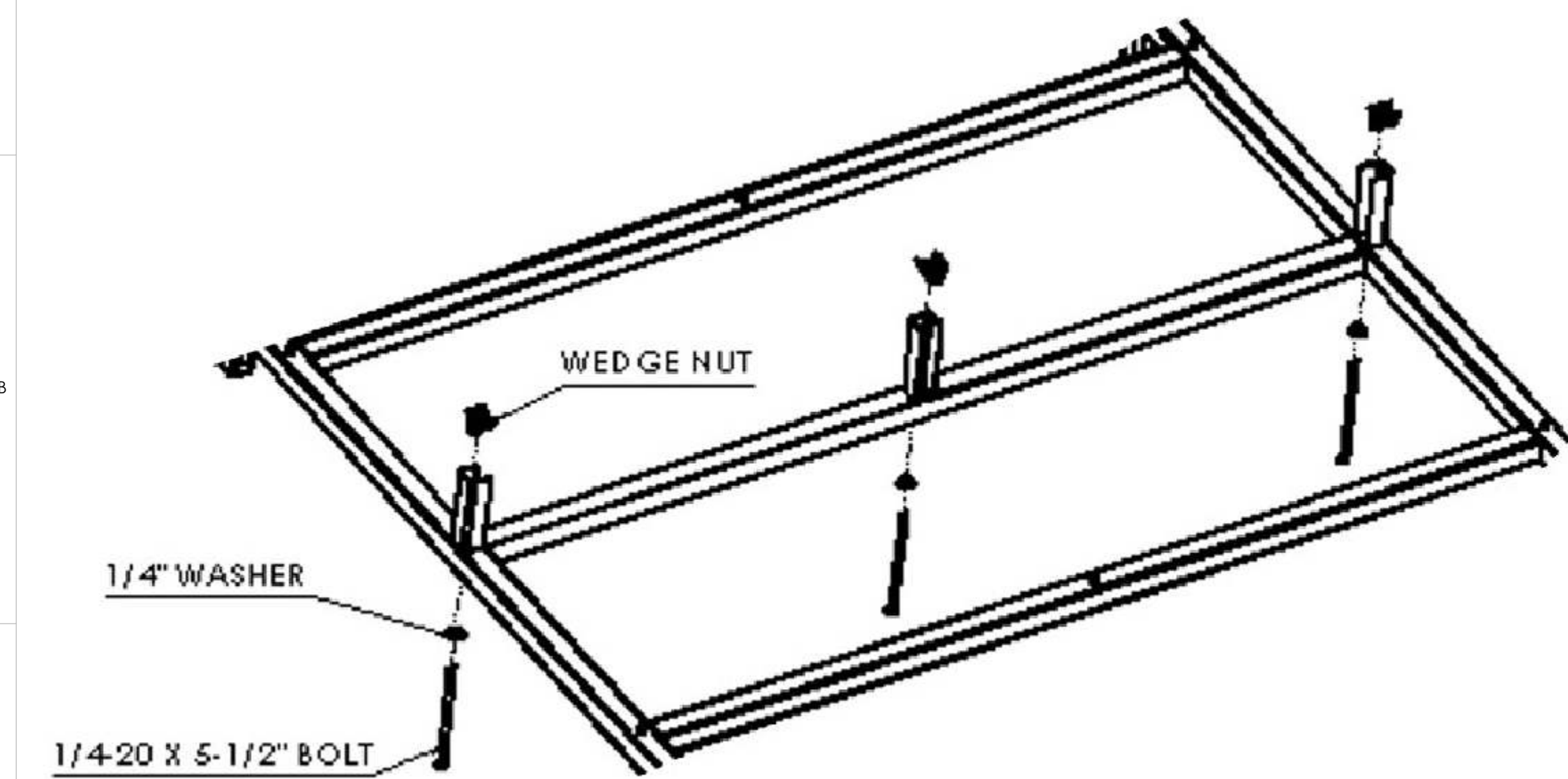


**BASE-EXTENSION**  
THE BASE-EXTENSION WILL HAVE FLAT BAR ON ONE END OF THE UNIT WITH HOLES TO ALLOW BOLTING TO THE BASE-START.

**START & EXTENSION TUBES**  
SHOWN TO THE RIGHT  
ARE THE START AND  
EXTENSION TUBES THAT  
JOIN THE TOP OF THE  
UNIT.

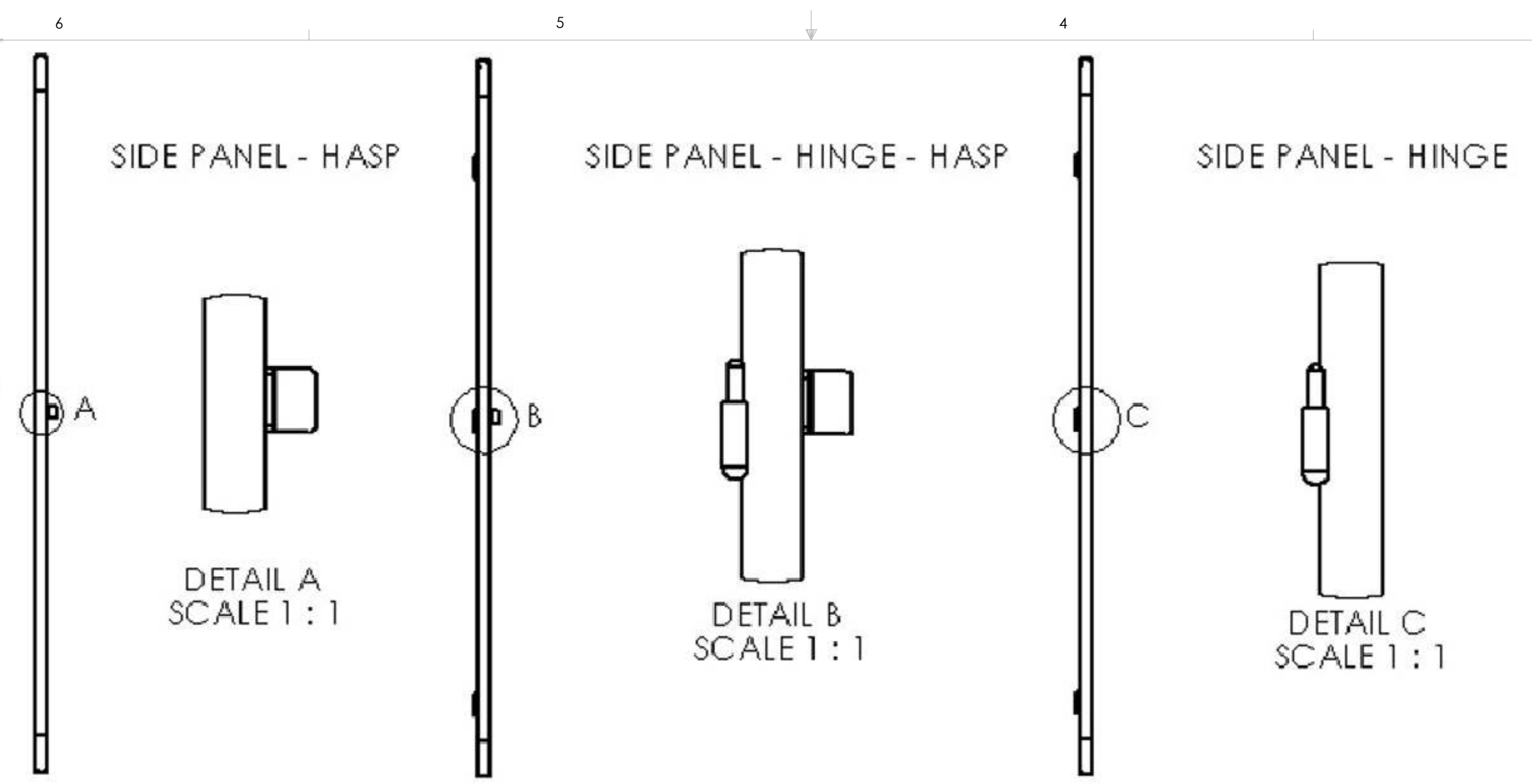
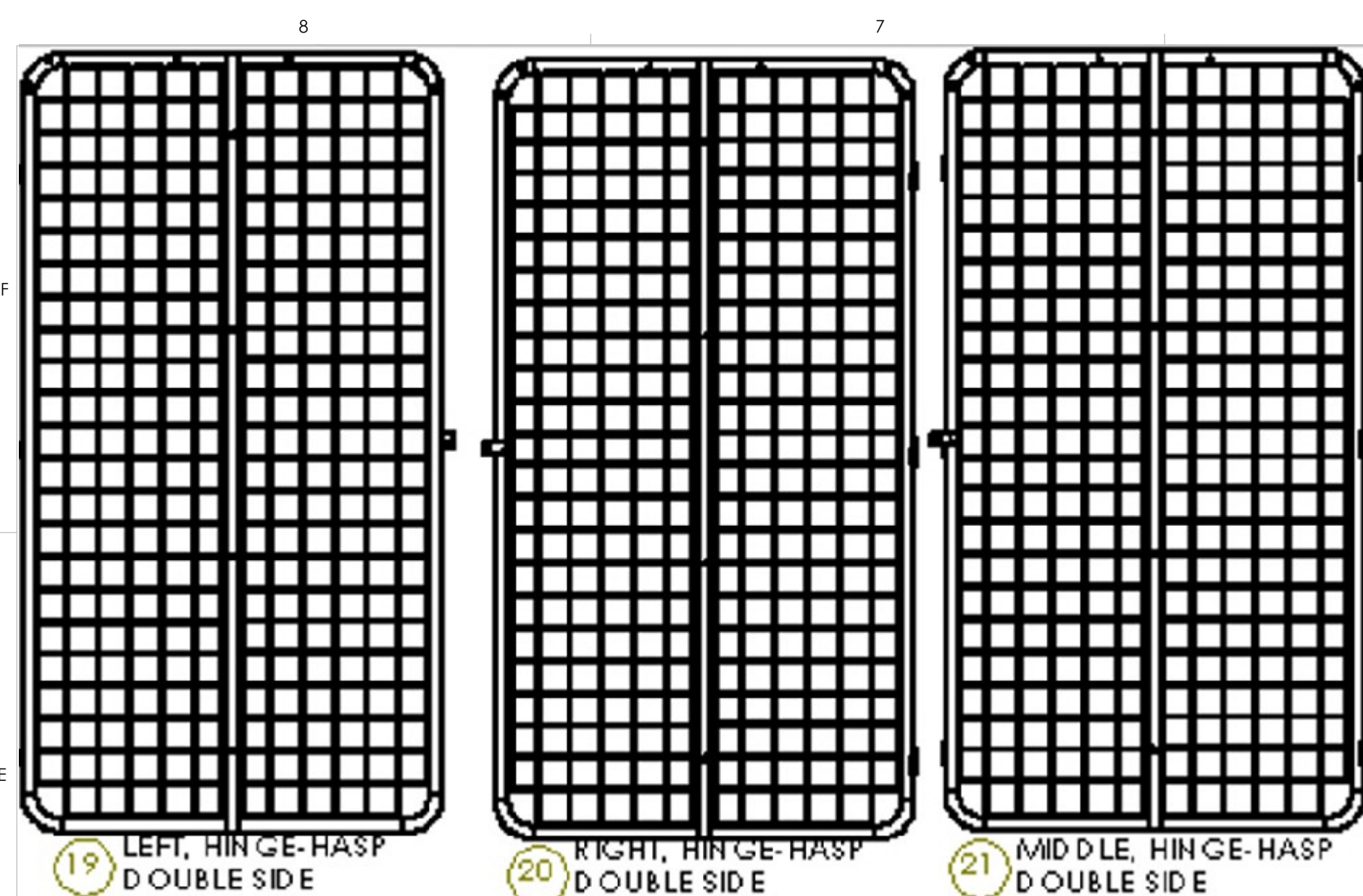


**STEP 2:**  
LOCATE THE START TUBE AND EXTENSION TUBES AND ASSEMBLE THE HARDWARE TO IT AS SHOWN ABOVE. DO NOT TIGHTEN AT THIS POINT JUST HAND START. 1/4-20 X 5-1/2" BOLTS, 1/4" FLAT WASHERS, AND WEDGE NUTS



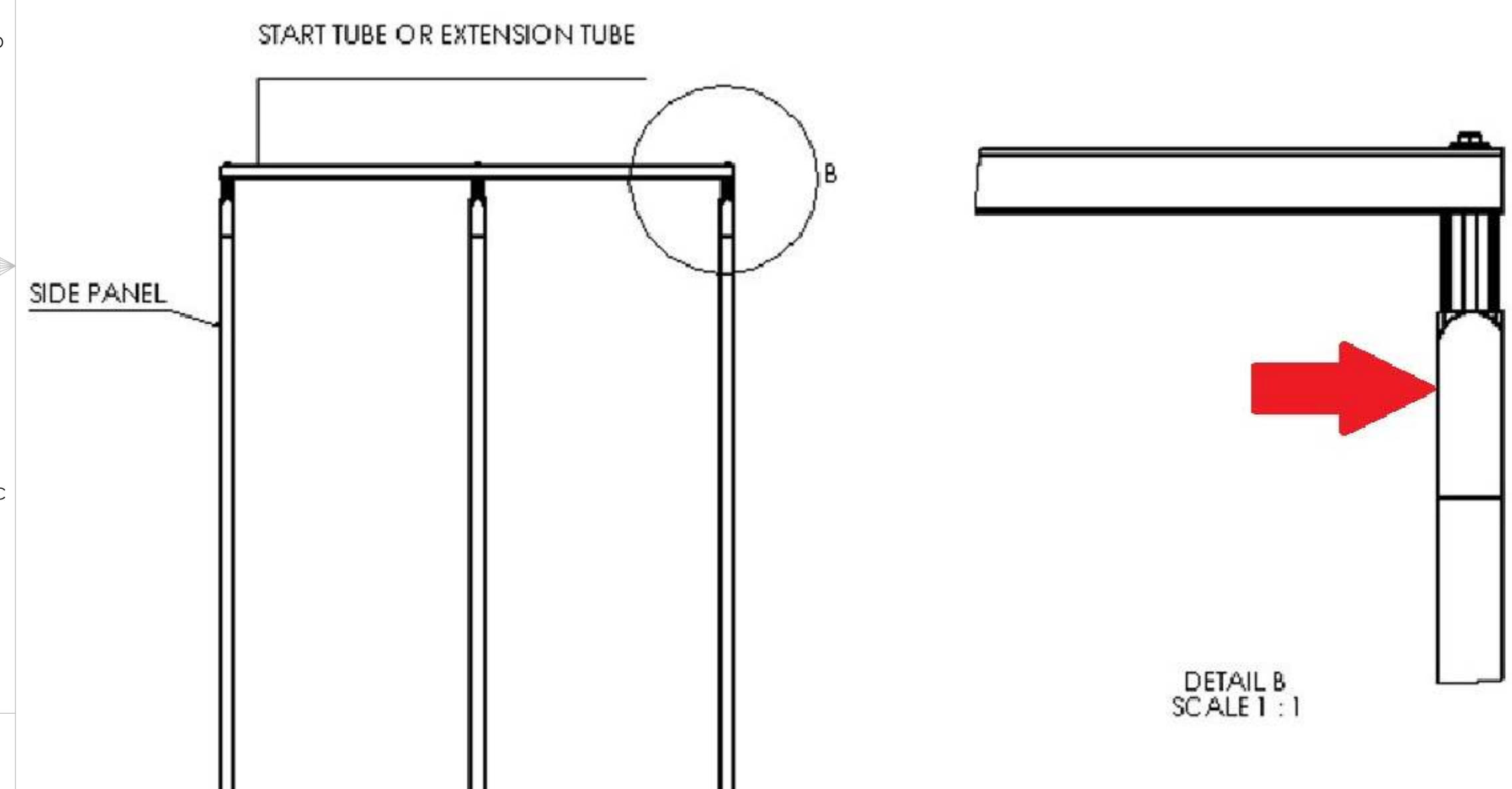
**STEP 3:**  
LOCATE THE BASE-START AND ASSEMBLE THE SAME HARDWARE USED FOR THE START TUBE AS SHOWN ABOVE. DO NOT TIGHTEN AT THIS POINT JUST HAND START.

<b>GEARGRID</b>	DRAWN	NAME	DATE	TITLE:
	ENGINEER			<b>GEARGRID, ISLAND ASSEMBLY</b>
<small>PROPRIETARY AND CONFIDENTIAL THE INFORMATION CONTAINED IN THIS DRAWING IS THE SOLE PROPERTY OF GEARGRID CORPORATION. ANY REPRODUCTION IN PART OR AS A WHOLE WITHOUT THE WRITTEN PERMISSION OF GEARGRID CORPORATION IS PROHIBITED.</small>		<small>UNLESS OTHERWISE SPECIFIED: DIMENSIONS ARE IN INCHES TOLERANCES: ANGLE MACHINED ±.5° ANGLE FORMED ±1° TWO PLACE .XX ±.03 THREE PLACE .XXX ±.010 HOLE Ø .XXX ±.005</small>		
<small>INTERPRET DIM AND TOLERANCE PER ASME Y14.5M-1994 THIRD ANGLE PROJECTION</small>	<small>NATIONAL REF CUT SHEET FINISH SEE NOTES</small>	SIZE	PART NO.	REV
		<b>D</b>		
DO NOT SCALE DRAWING   SHEET 2 OF 8				

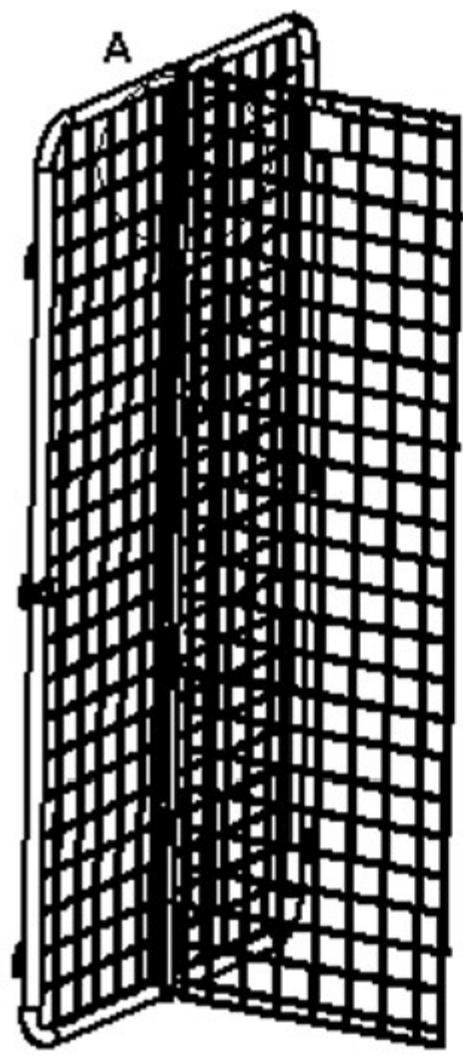


**ASSEMBLY NOTE:**  
LOCATE THE SIDE PANELS. IF YOUR UNITS HAVE DOORS THE SIDE PANELS WILL BE CONFIGURED AS SHOWN ABOVE WITH HASP/HINGES.

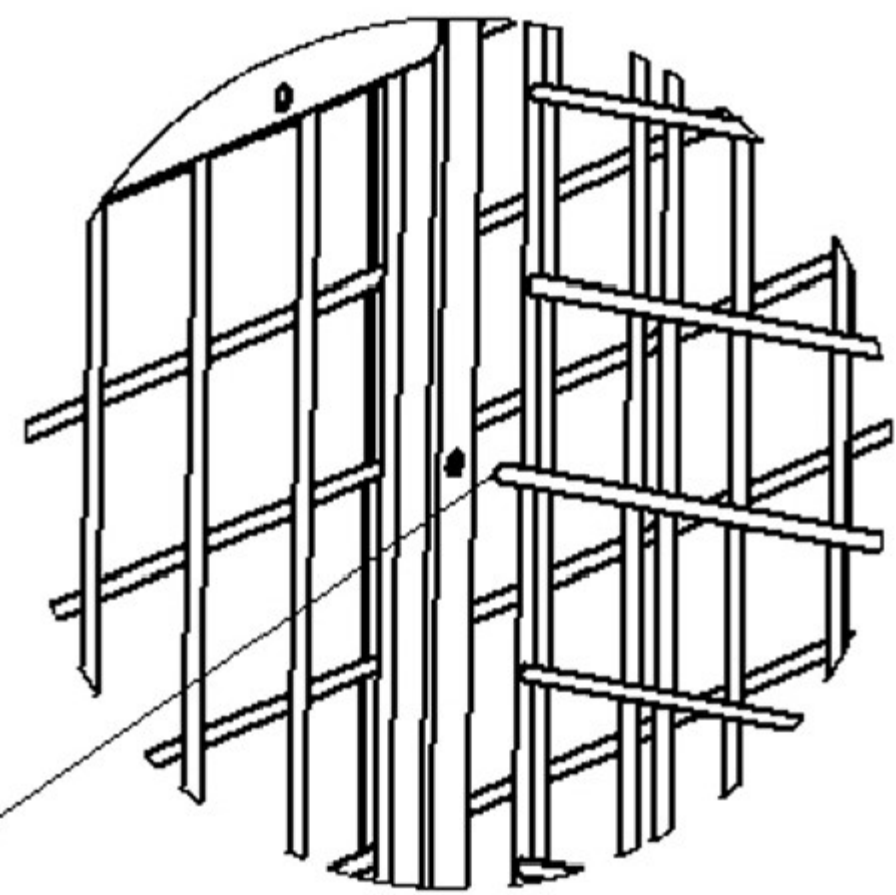
**ASSEMBLY NOTE:**  
IF UNIT HAS DOORS THE HINGE-HASP ORIENTATION IS SHOWN ABOVE AS YOU ARE LOOKING AT THE UNIT FROM THE FRONT. DETAIL "A" SHOWS THE HASP AT THE VERY LEFT OF TOTAL RUN OF UNITS. DETAIL "B" SHOWS ALL SIDES IN THE MIDDLE AND DETAIL "C" SHOWS THE VERY FAR RIGHT END WITH JUST THE HINGES.



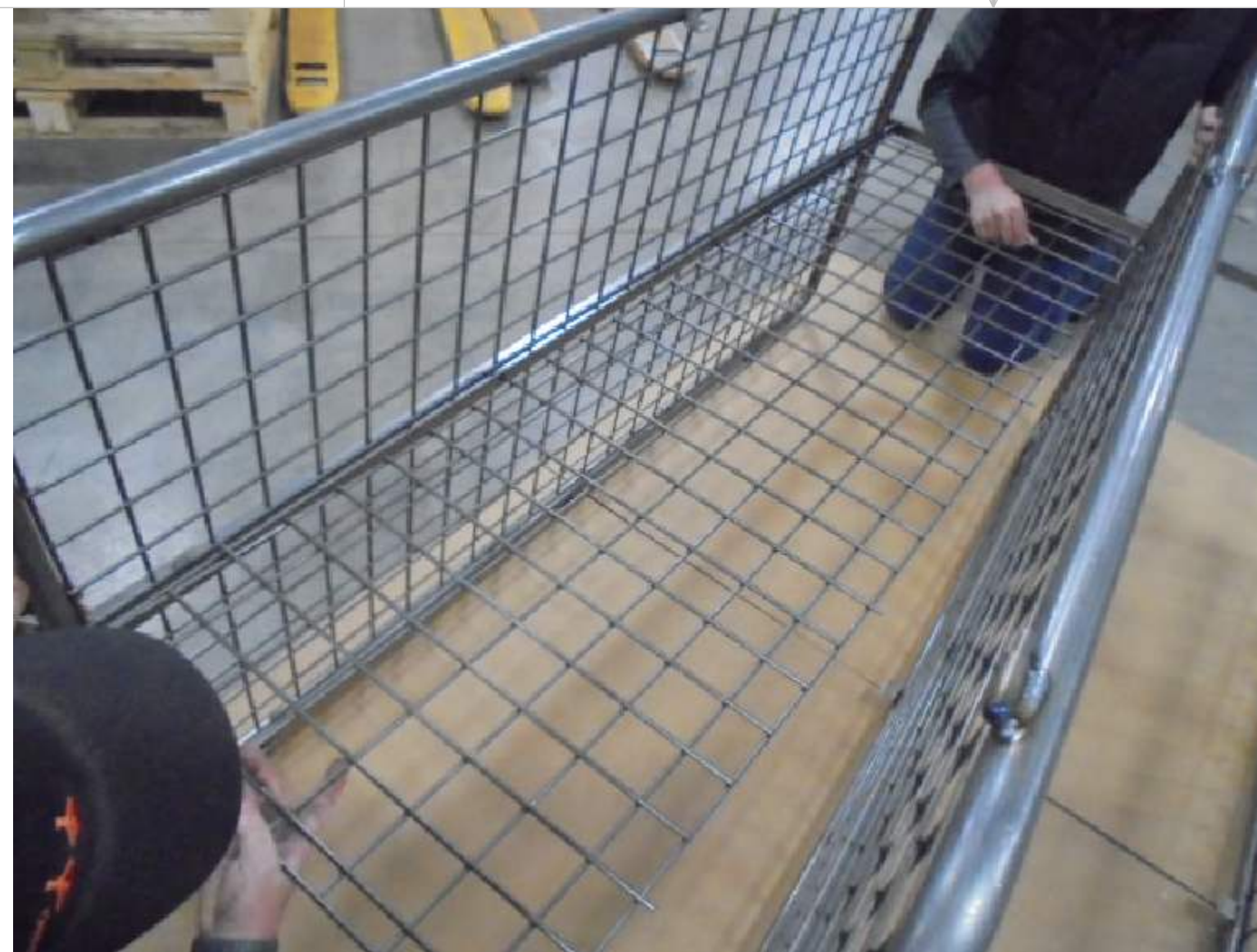
**STEP 4:**  
INSERT THE START TUBE AS SHOWN ABOVE WITH THE SIDE PANELS ALIGNED AS DESCRIBED IN THE ABOVE NOTES. ENSURE THE HOLES FOR THE TOPS ARE LOCATED WHERE THE ARROW ABOVE SHOWS. ENSURE THE SHORT "SIDE PANEL WIRES" ARE ON THE SAME SIDE OF EACH PANEL (THE SHELVES WON'T FIT PROPERLY IF THE WIRES ARE NOT ALL ON THE SAME SIDE). PUSH THE START TUBE IN THE SIDES JUST PAST THE WEDGE NUT. SHOWN ABOVE IS A THREE START CONFIGURATION WITH DOORS. IF YOUR UNIT DOES NOT HAVE DOORS ENSURE THE SHORT WIRES ARE IN THE SAME DIRECTION AND THE SMALL HOLE ON THE BOTTOM OF THE ROUND TUBE IS AT THE BOTTOM OF THE UNIT WHERE THE BASE WILL INSTALL.



EXTENDED WIRE  
MATES INTO THE  
HOLE IN THE SIDE  
PANEL SQUARE  
TUBE



**DETAIL A**  
SCALE 1 : 1



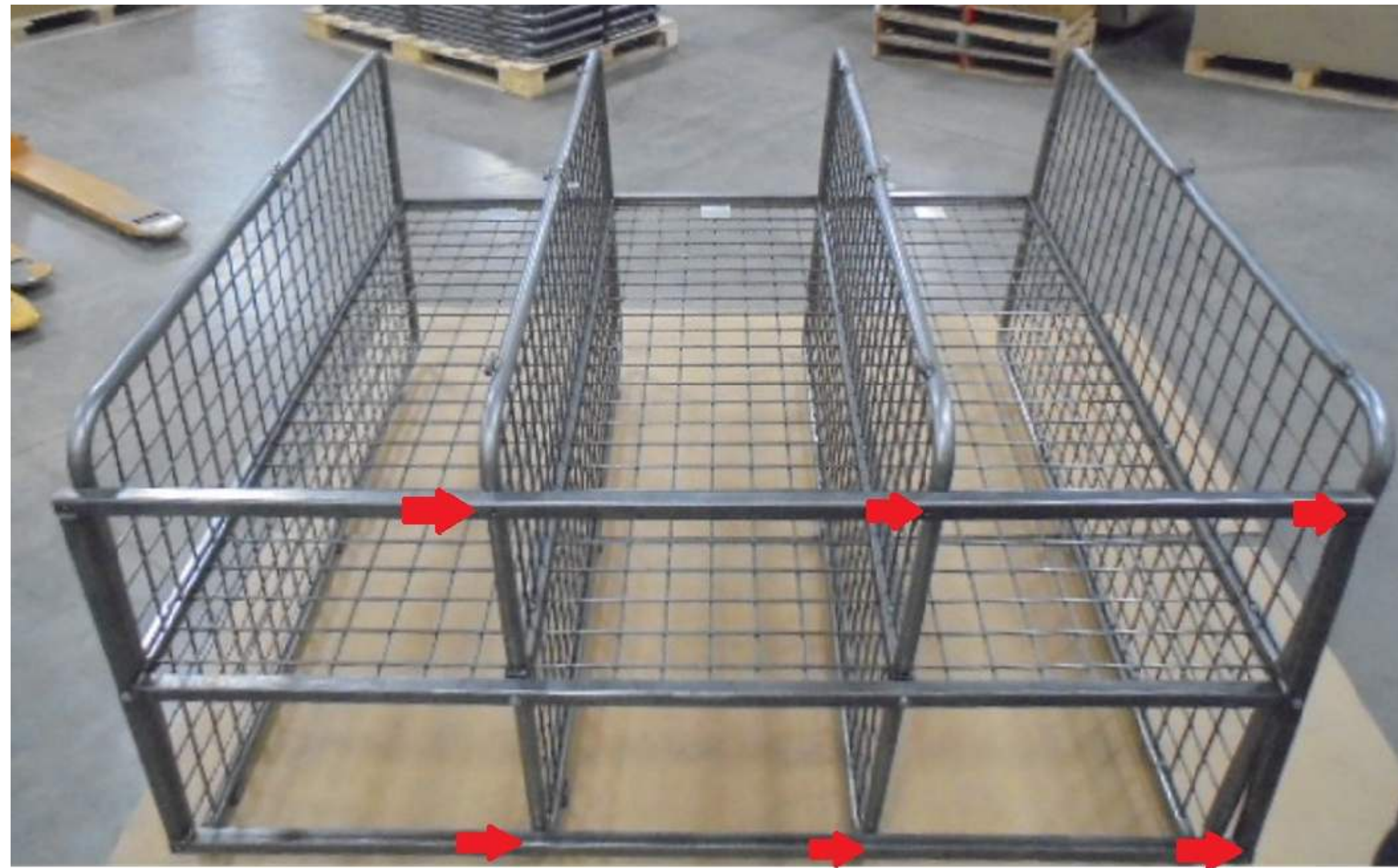
**STEP 5:** INSTALL THE BACK GRIDS AS SHOWN ABOVE WITH THE BADGE TO THE TOP. INSERT THE LONG WIRES INTO THE SIDE PANEL HOLES AS SHOWN IN "DETAIL A". INSERT THE BACK GRIDS FOR THE UNIT START. ONCE THE GRIDS ARE IN PLACE PUSH THE START TUBE ALL THE WAY DOWN INTO THE SIDE PANEL SQUARE TUBES.



**STEP 6:** POSITION BASE-START AS SHOWN ABOVE WITH HARDWARE INSTALLED AS INSTRUCTED IN STEP 3.



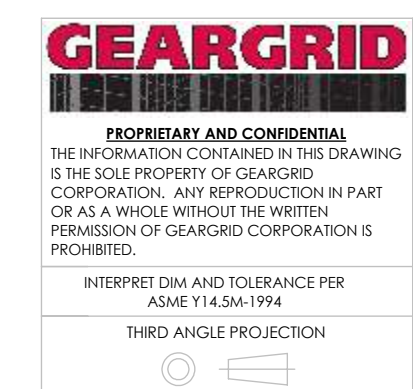
**STEP 7:** SLIDE BASE CHANNELS INTO THE SIDE PANEL SQUARE TUBES AS SHOWN ABOVE. USE A Mallet TO SEAT THE BASE ALL THE WAY INTO THE SIDE PANELS.



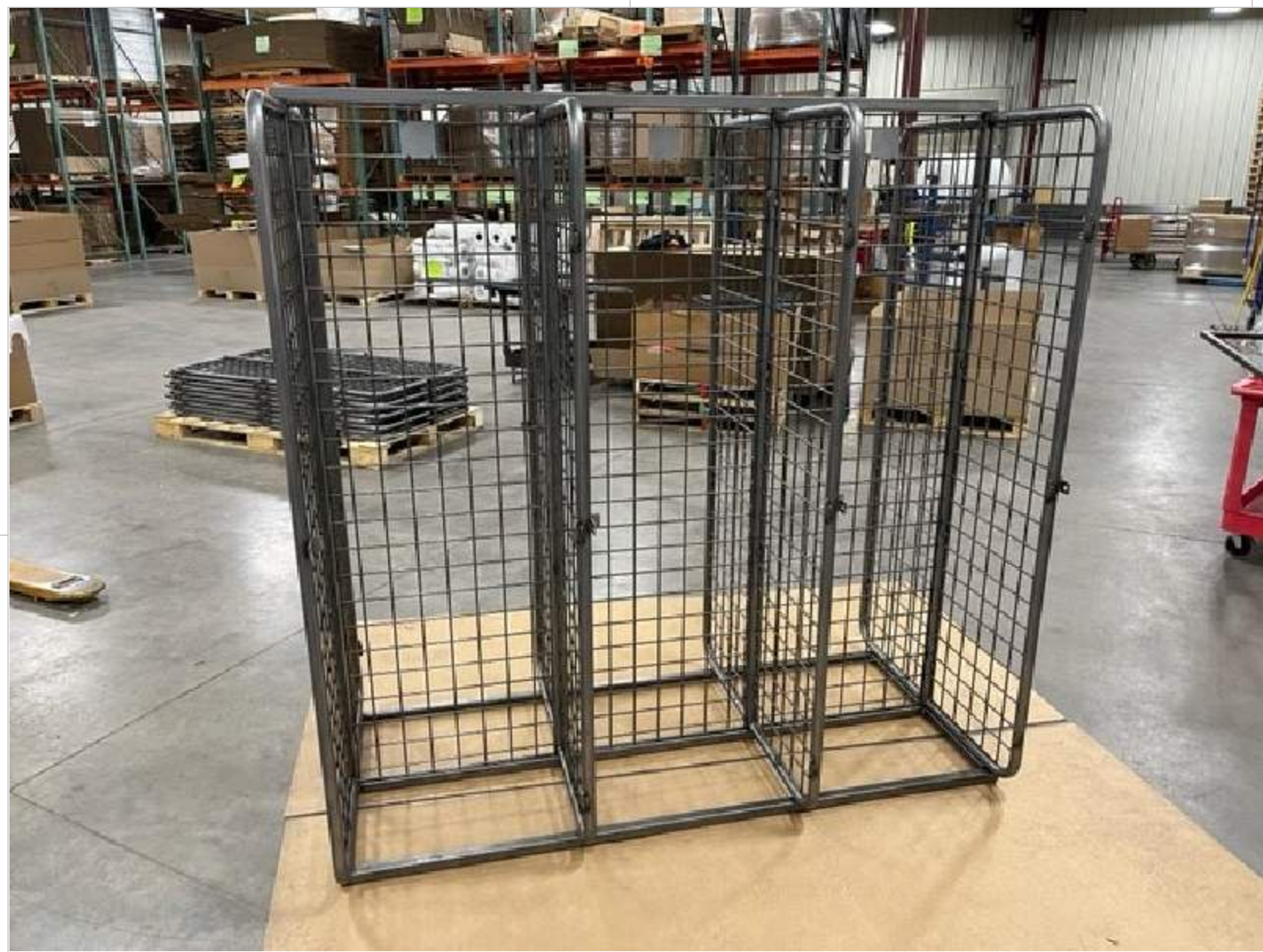
**STEP 8:** TIGHTEN THE WEDGE NUT BOLTS IN THE START-TUBE AND BASE-START. INSERT THE 2" SCREWS AT THE LOCATIONS NOTED BY ARROW ABOVE TO SECURE THE SIDE PANELS TO THE BASE.



2" SCREWS  
SHOWN IN IMAGE  
TO THE LEFT.



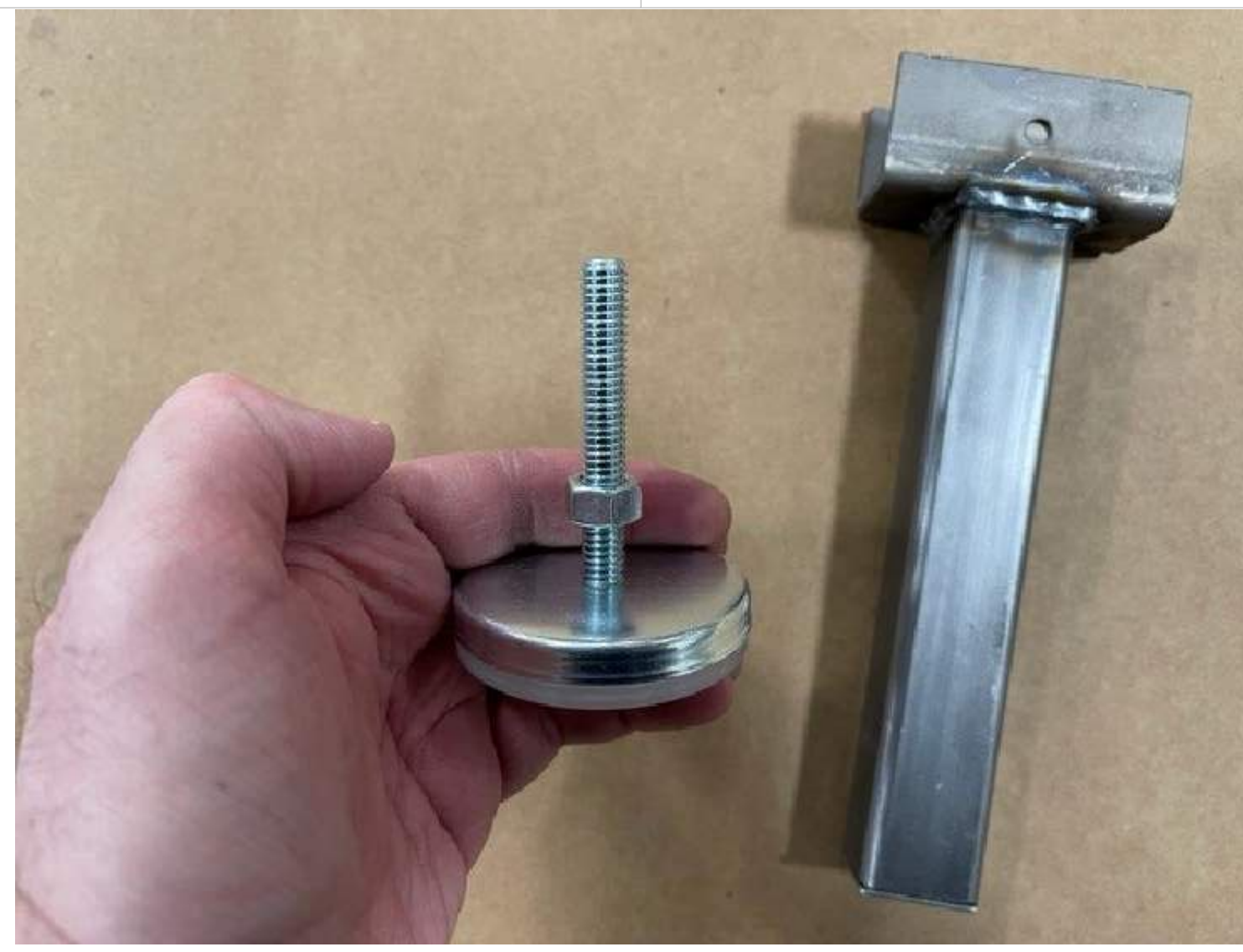
TITLE: GEARGRID ISLAND ASSEMBLY		
SIZE: D	PART NO.	REV
DO NOT SCALE DRAWING   SHEET 4 OF 8		



**STEP 9:**  
 FLIP THE START UNIT UP ON ITS BASE AS SHOWN ABOVE. POSITION IN DESIRED LOCATION, THE REST OF THE EXTENSIONS WILL BOLT UP WHERE THE HOLES ARE IN THE BASE TUBE.



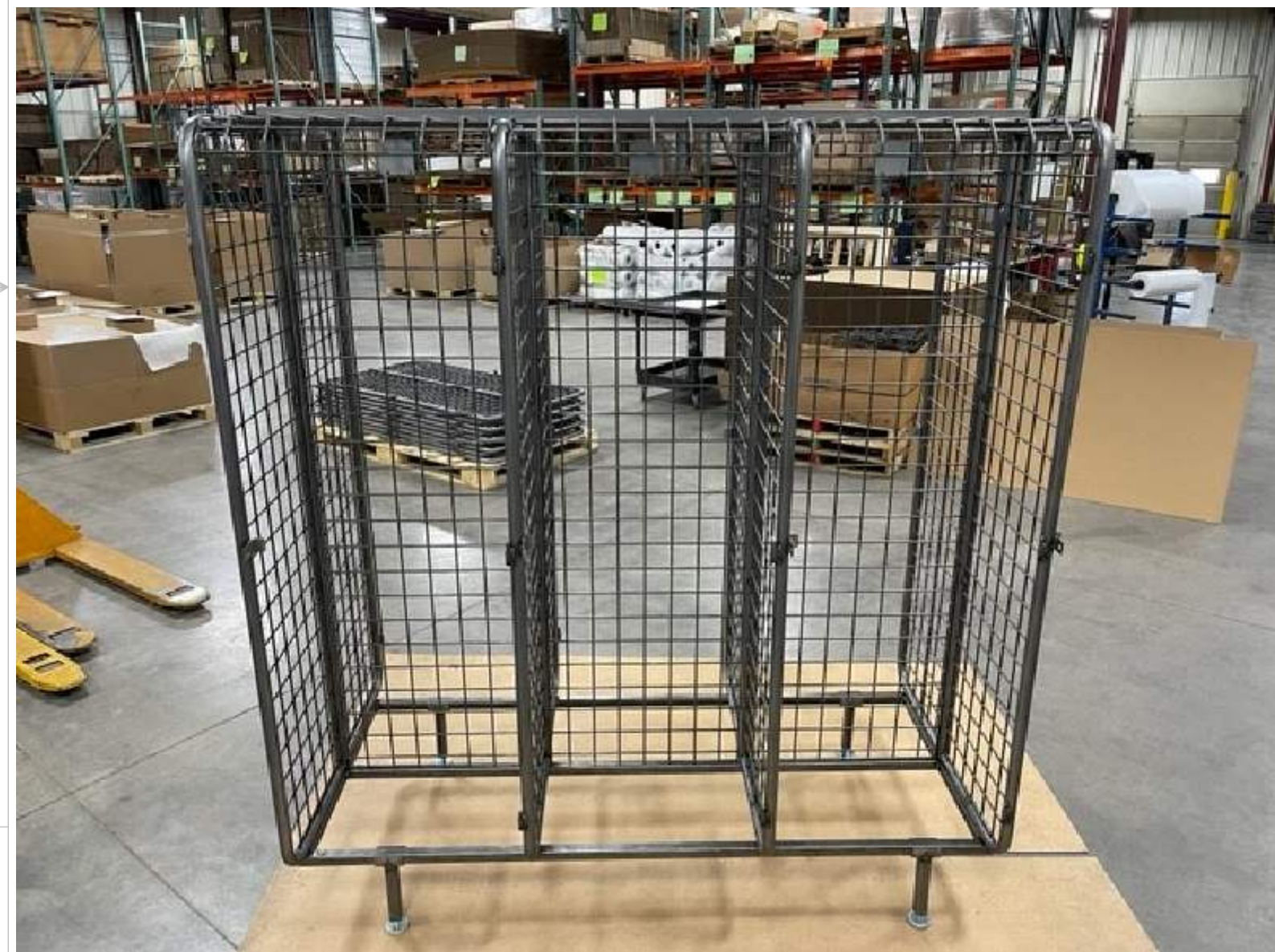
**STEP 10:**  
 GATHER THE LEGS, ADJUSTABLE FEET AND 3/8" NUTS



**STEP 11:**  
 THREAD NUTS ONTO THE ADJUSTABLE LEG SO ALL ARE THE SAME. START WITH 1/2" ABOVE FOOT.

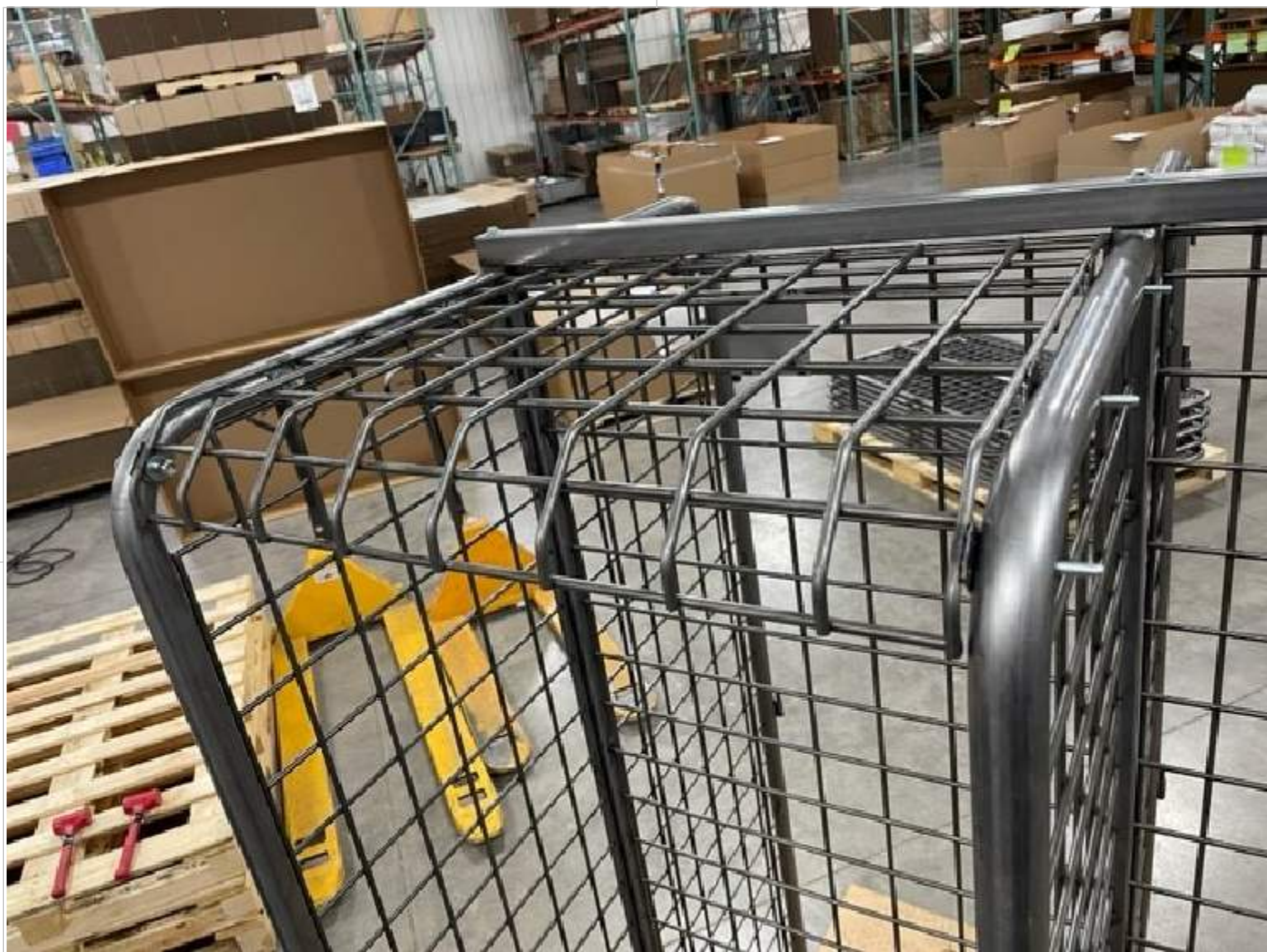


**STEP 12:**  
 THREAD FEET INTO LEGS, FINGER TIGHTEN THE NUTS AT THIS POINT.

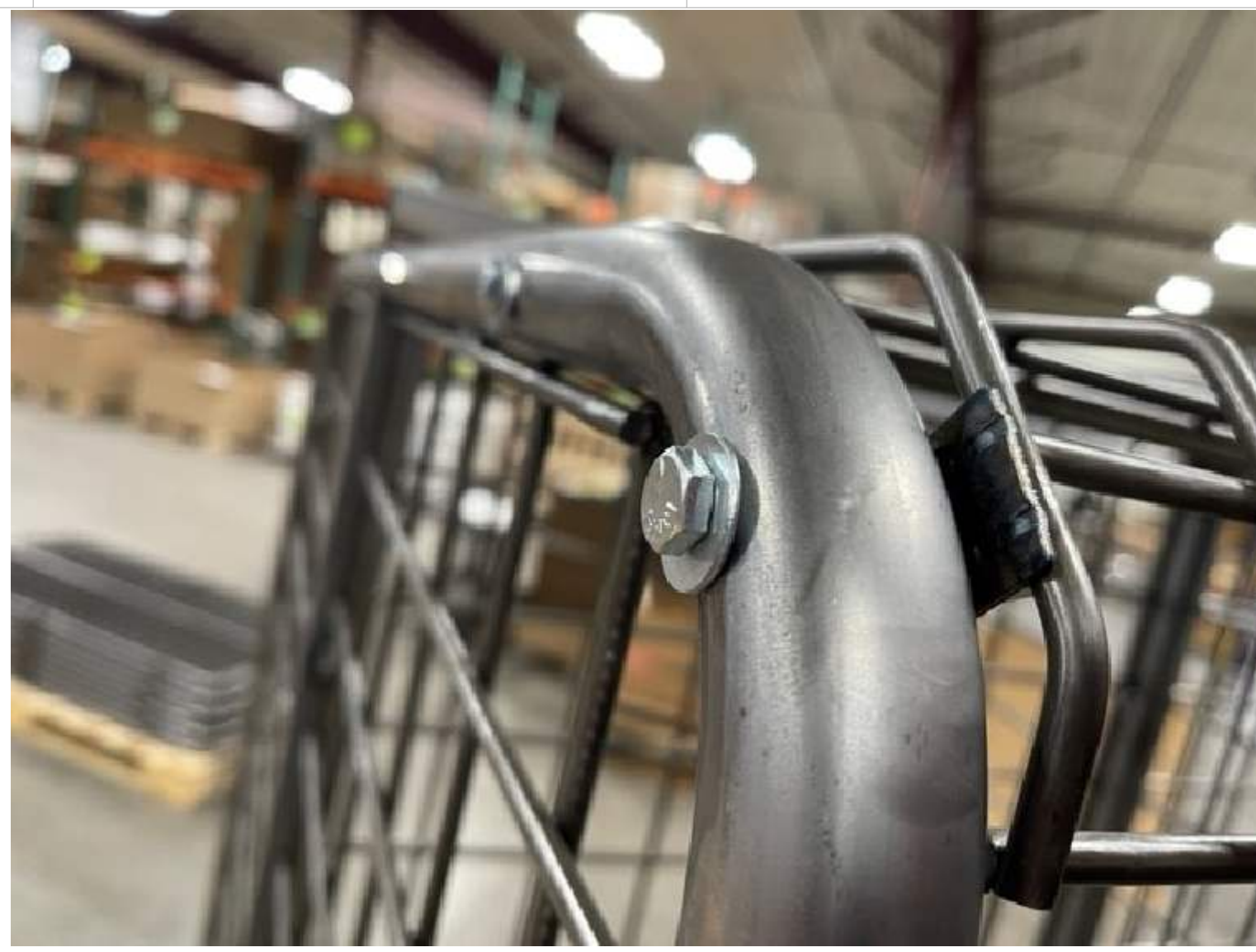


**STEP 13:**  
 LOCATE THE SELF DRILLING SCREWS. LIFT THE LEFT SIDE OF THE ASSEMBLY AND PLACE IN LEGS 6" IN ON BOTH SIDES OF THAT END. USE THE SELF DRILLING SCREWS TO SECURE THOSE TWO LEGS. LIFT THE OTHER SIDE AND PLACE IN TWO MORE LEGS. LEGS SHOULDN'T SPAN A LENGTH MORE THAN 40".





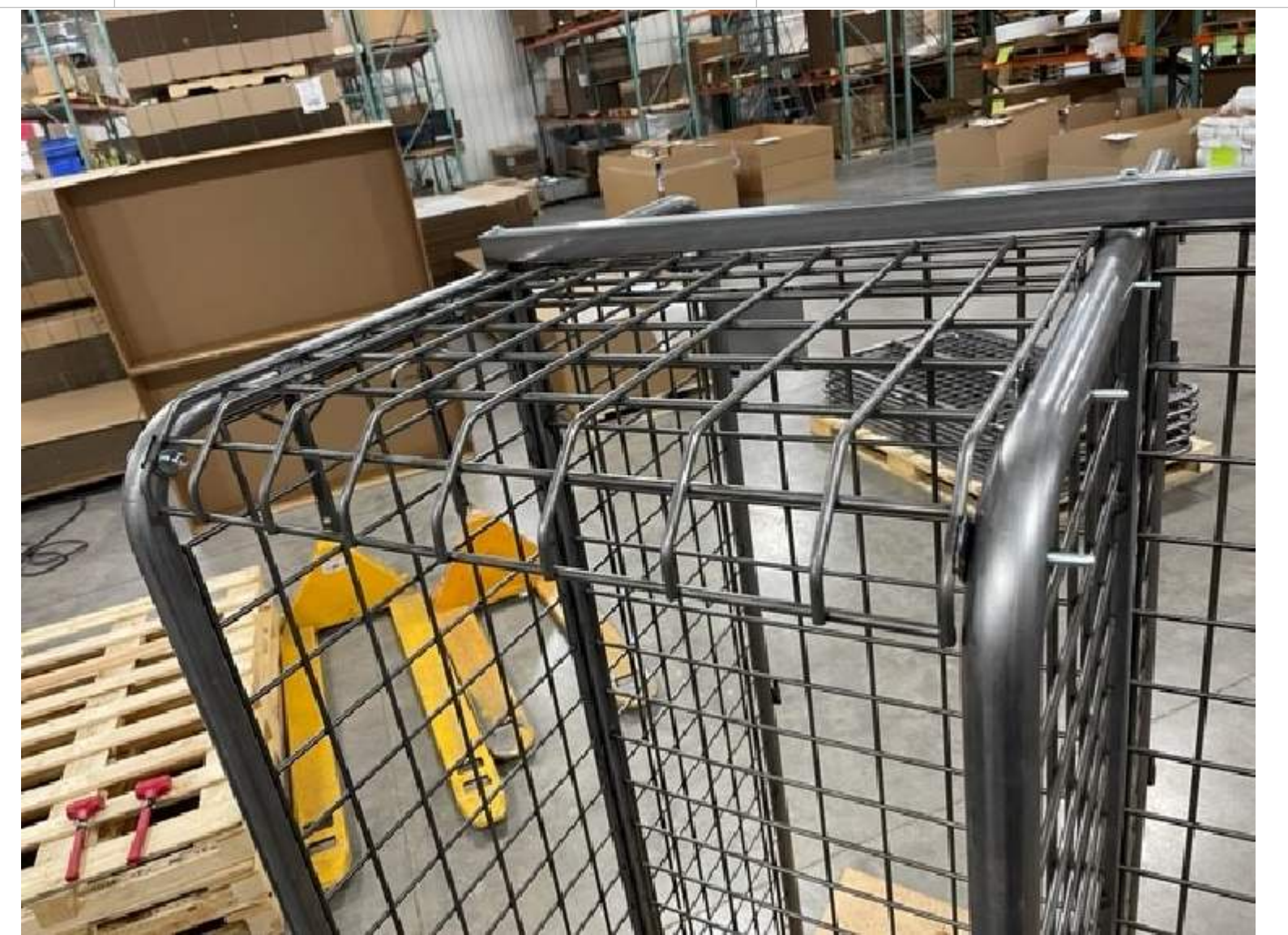
**STEP 14:**  
LOCATE AND GATHER THE LOCKER TOPS AND HARDWARE. 1/4-20 X 2" BOLTS, 1/4" FLAT WASHERS AND 1/4-20 NYLOCK NUTS.



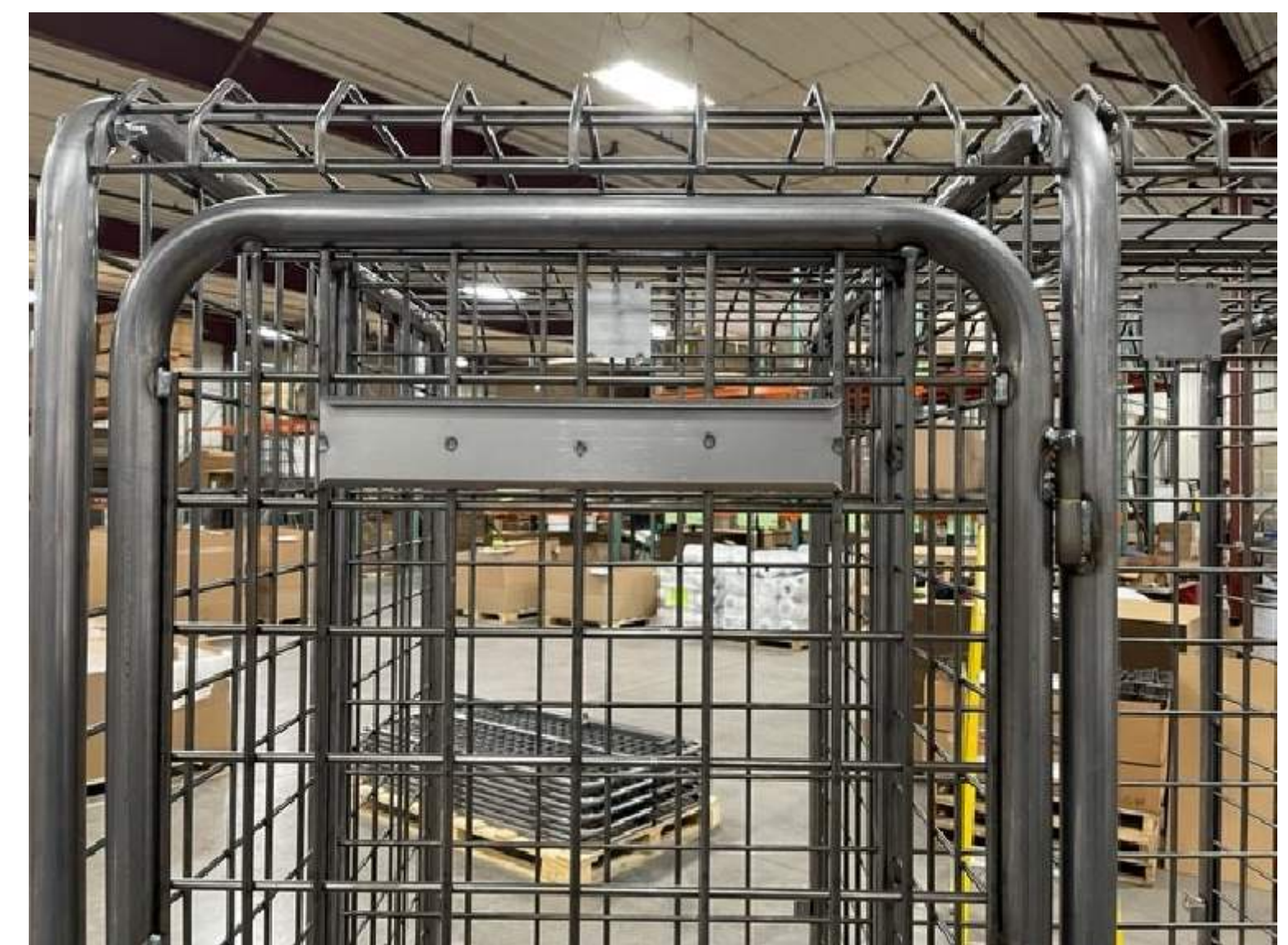
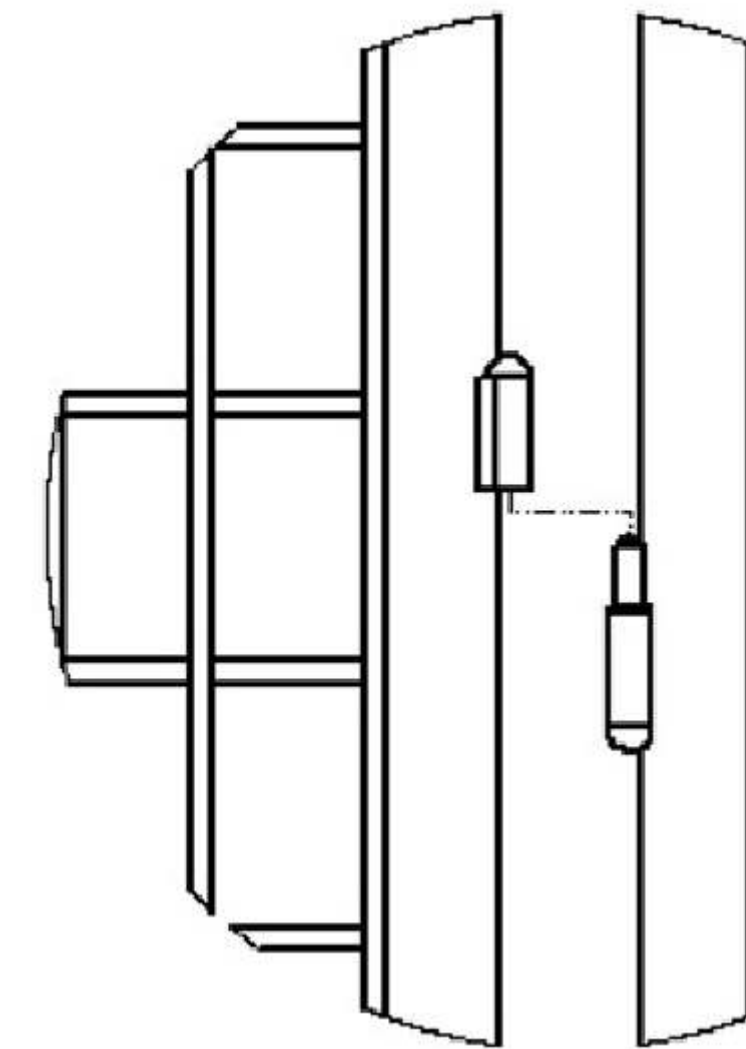
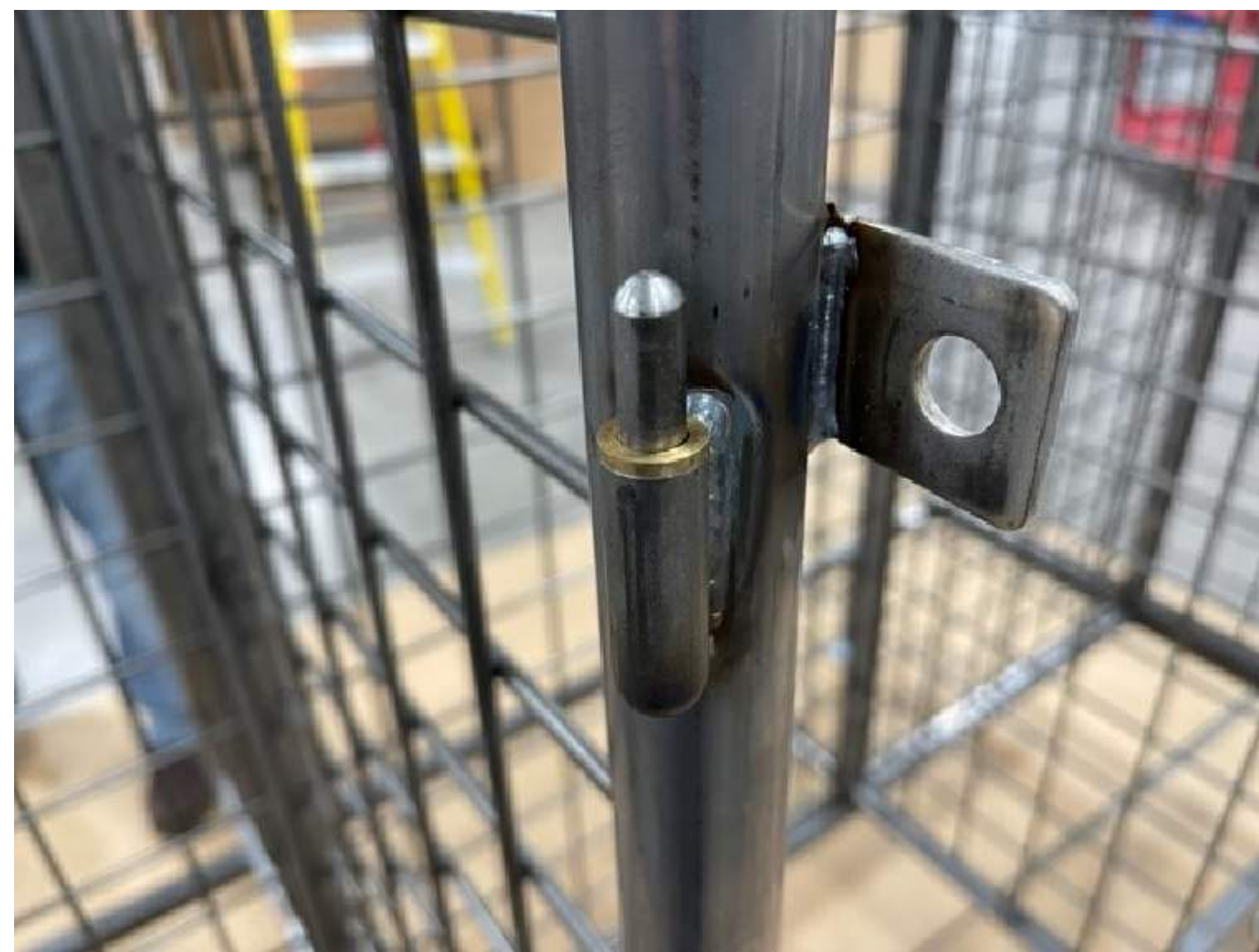
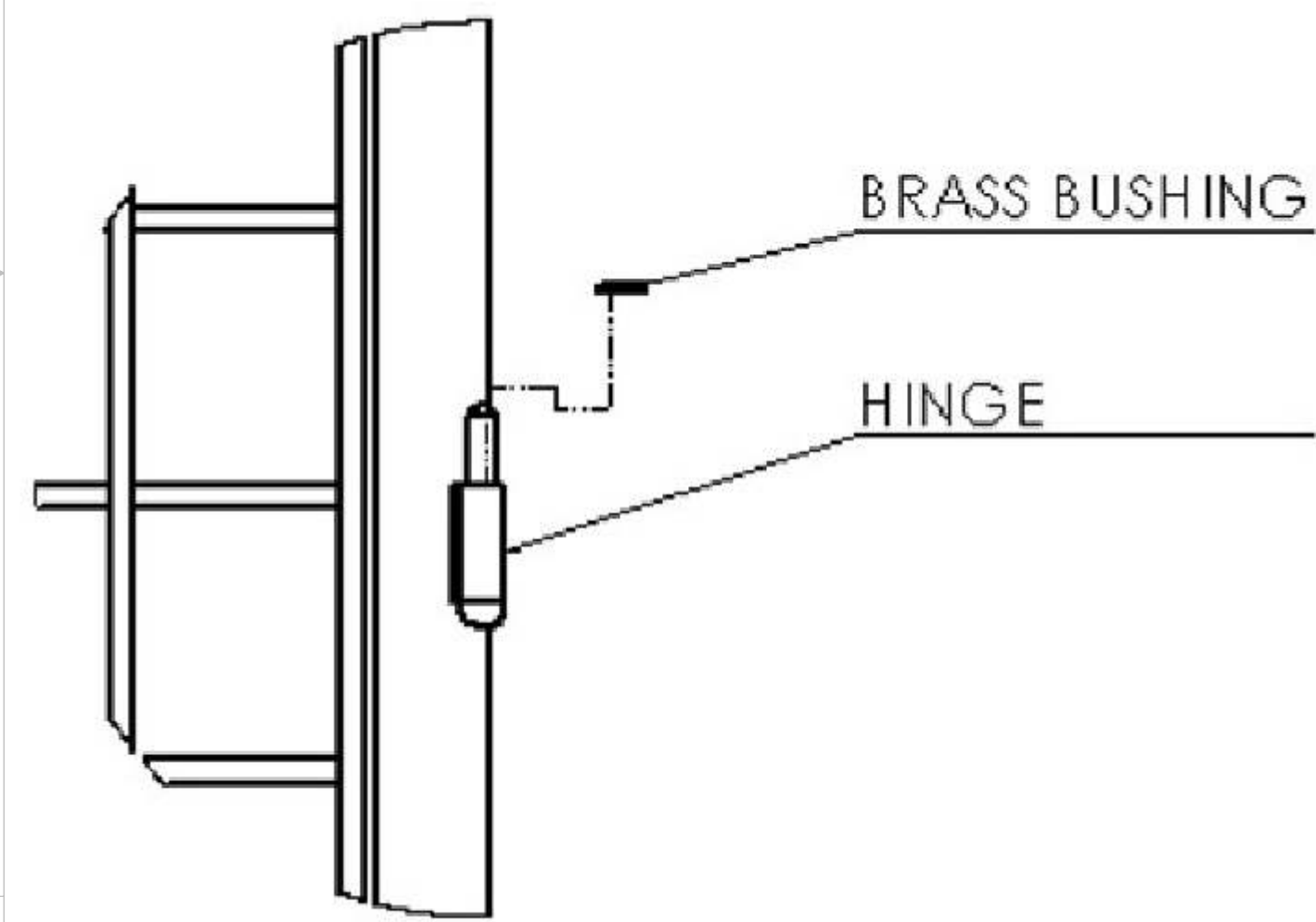
**STEP 15:**  
EACH TOP HAS 6 MOUNTING LOCATIONS THAT LINE UP WITH THE HOLES IN THE SIDE PANELS. START AT THE LEFT AND FEED THE BOLTS WITH WASHERS INSTALLED THROUGH THE SIDE AND THE TOP AS SHOWN.



**STEP 16:**  
ON THE INSIDE INSTALL WASHERS AND NUTS TO EACH OF THE BOLTS. HAND START FOR NOW UNTIL ALL TOPS ARE IN PLACE.

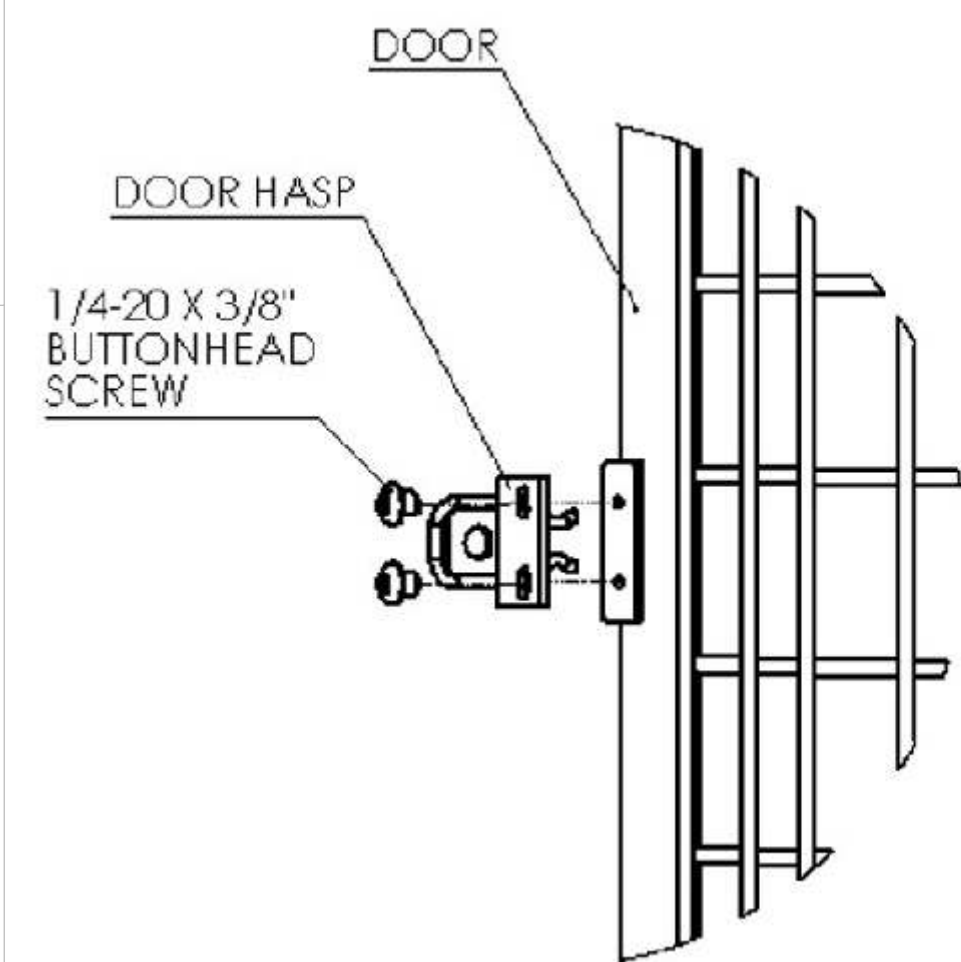


**STEP 17:**  
THE NEXT SIDE PANEL OVER WILL HAVE THE BOLTS PASSING THROUGH TWO TOPS AND THE SIDE PANEL IN THE MIDDLE. ONCE ALL TOPS ARE INSTALLED TIGHTEN THE HARDWARE.

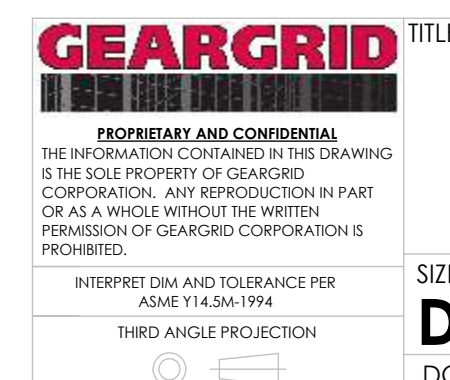
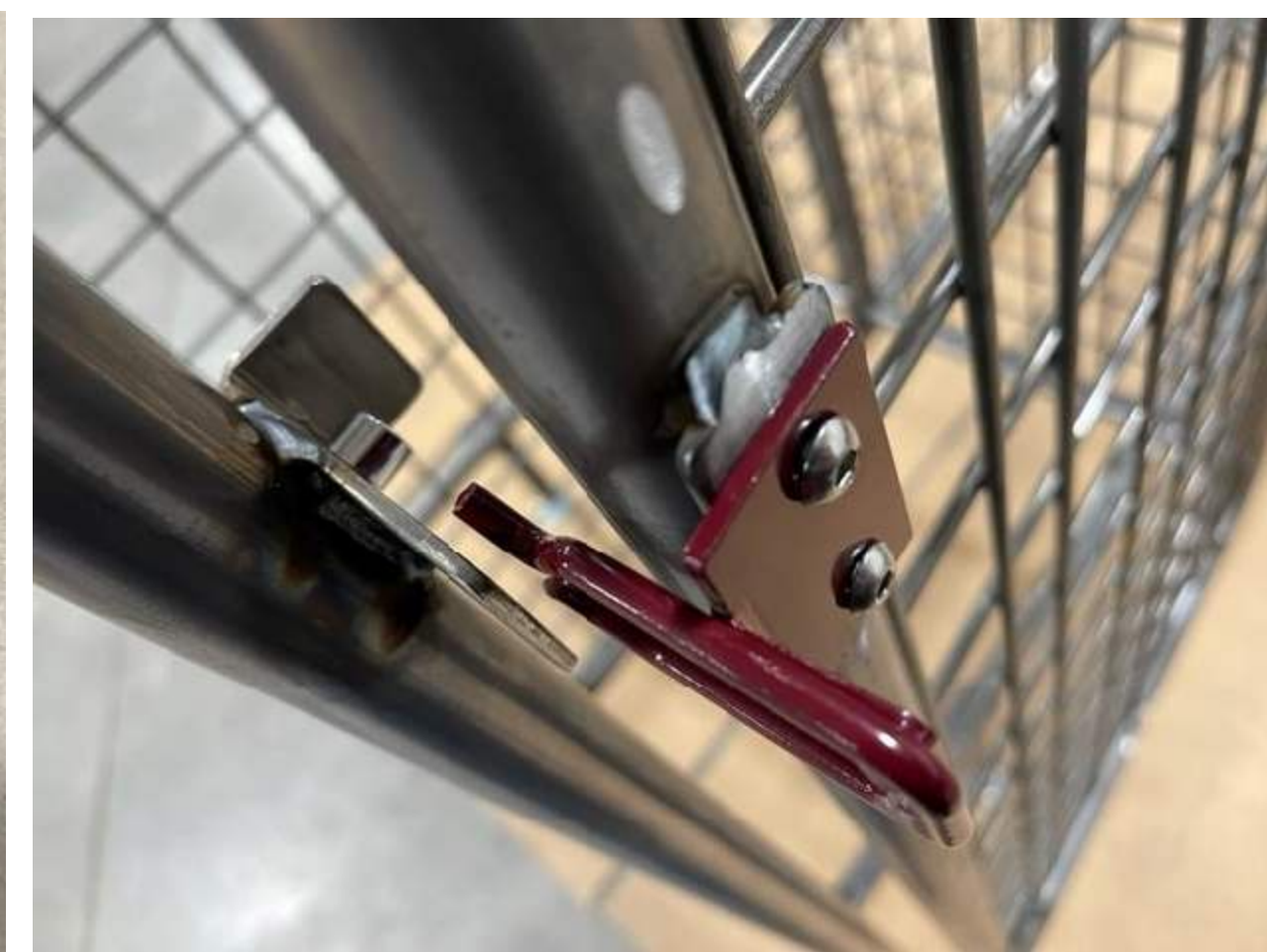


**STEP 18:**  
LOCATE AND GATHER THE BRASS BUSHINGS AND INSTALL ON EACH HINGE AS SHOWN ABOVE.

**STEP 19:**  
LOCATE AND GATHER THE DOORS AND INSTALL TO HINGES. LINE UP THE THREE HINGES PER DOOR AND SLIDE ON.

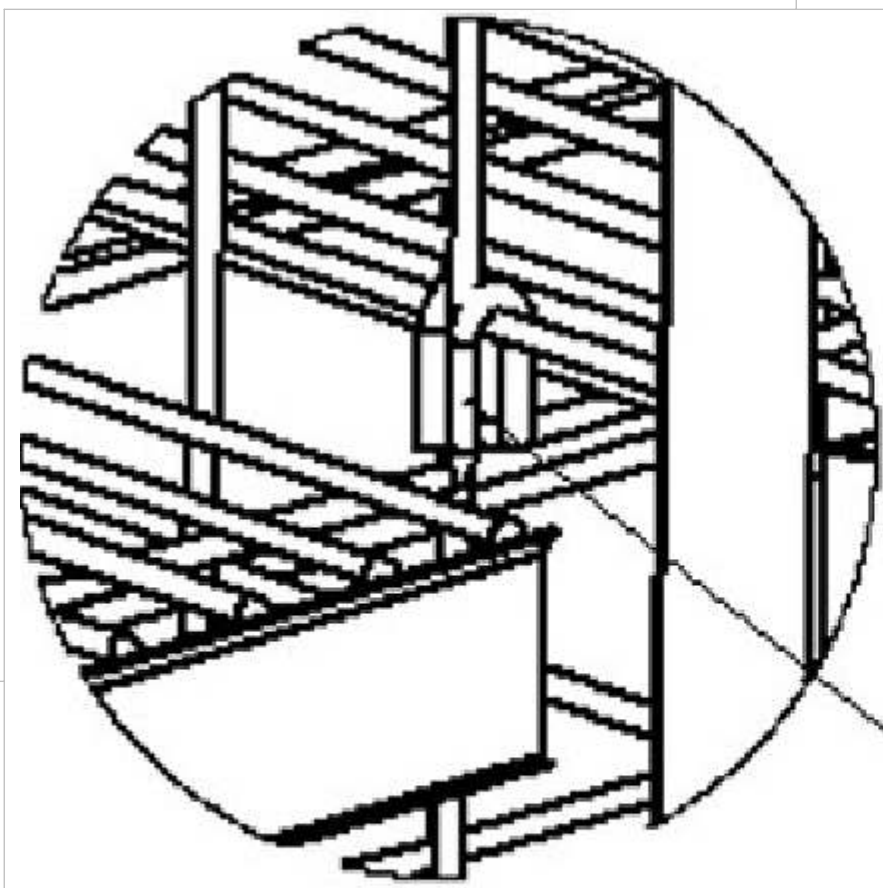


**STEP 20:**  
LOCATE AND GATHER THE DOOR HASP AND HARDWARE. 1/4-20 X 3/8" BUTTONHEAD SCREWS. INSTALL AS SHOWN TO THE LEFT, LEAVE LOOSE UNTIL FIT-UP TO STRIKER BOLT CAN BE ALIGNED. TIGHTEN ONCE ALIGNED AND CENTERED.



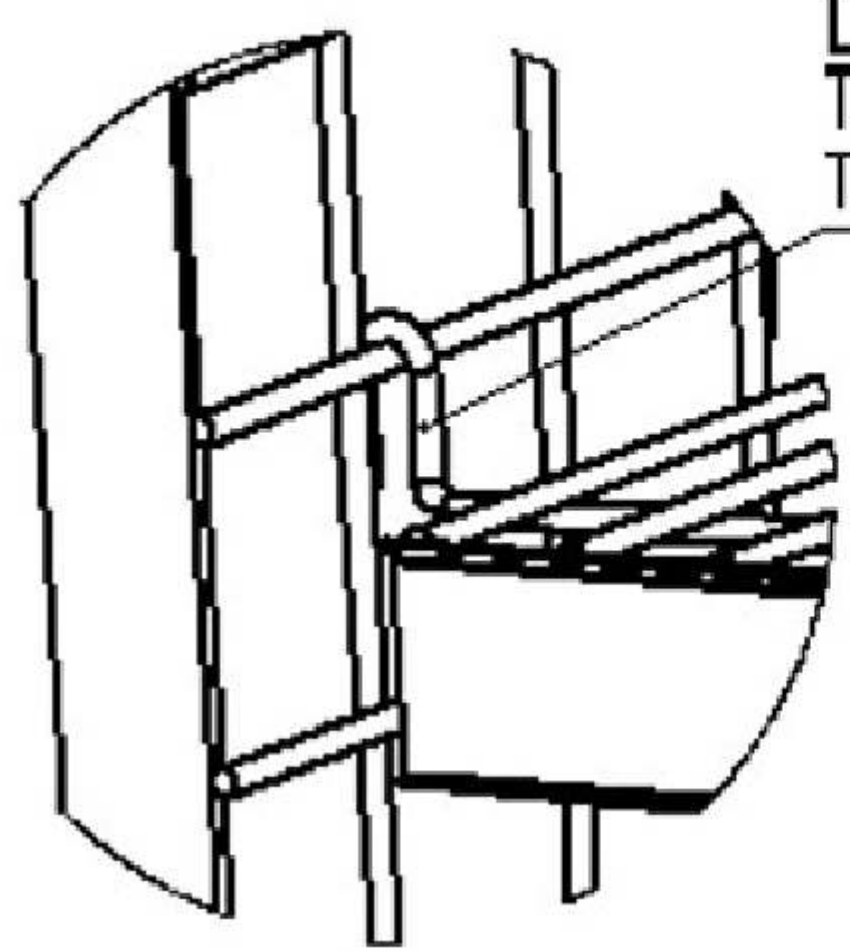
**GEARGRID ISLAND ASSEMBLY**

SIZE PART NO. REV  
**D**  
DO NOT SCALE DRAWING | SHEET 6 OF 8



**RIGHT SIDE OF SHELF**  
 THE SHELF WIRE GOES IN FRONT  
 OF FIRST VERTICAL WIRE

DETAIL A  
 SCALE 1 : 1

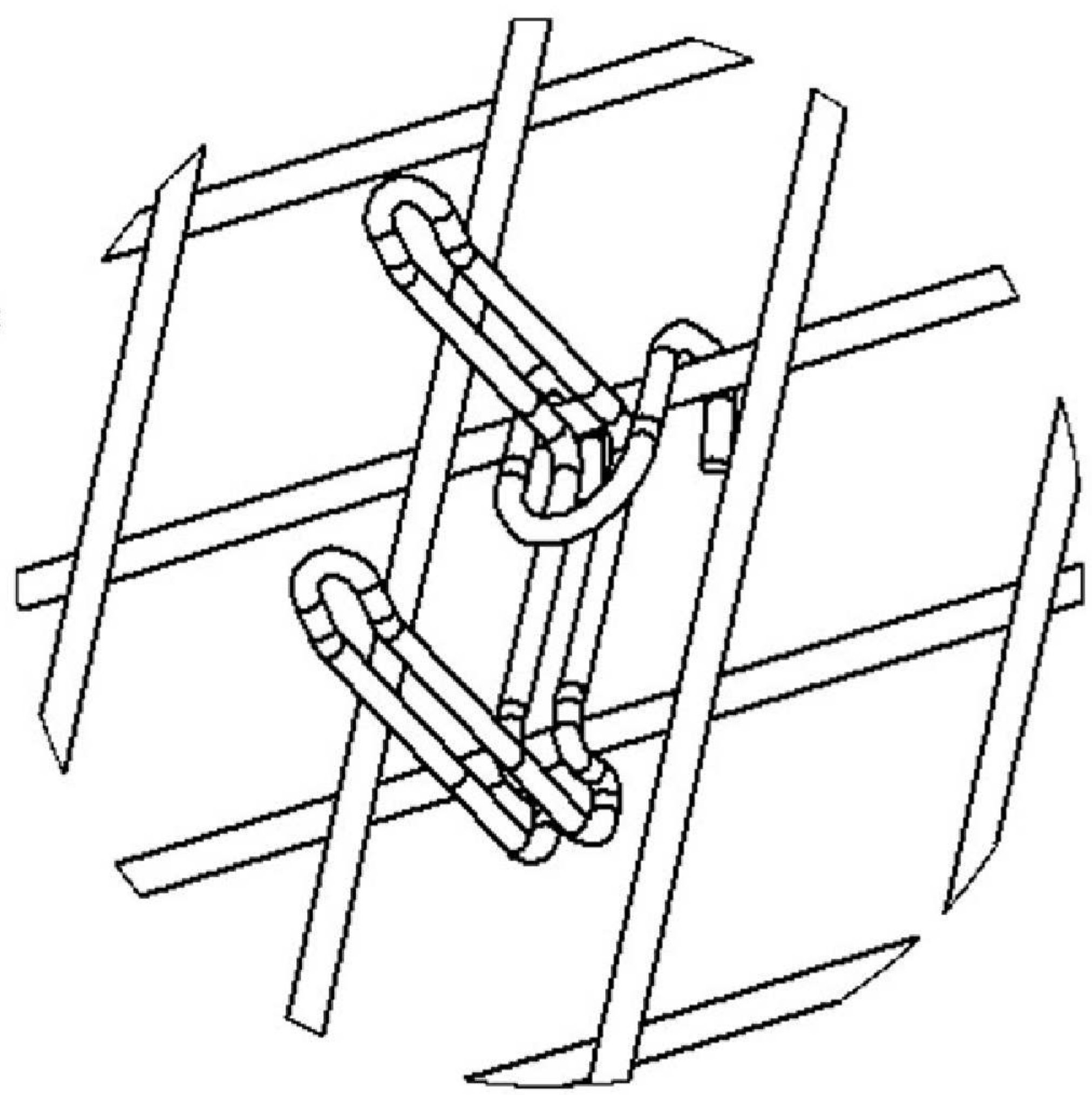


**LEFT SIDE OF SHELF**  
 THE SHELF WIRE GOES BEHIND  
 THE FIRST VERTICAL WIRE

**STEP 21:**  
 SHELF INSTALLATION IS SHOWN ABOVE.



SQUEEZE THE  
 TWO ENDS OF  
 THE APPAREL  
 HOOK TO  
 INSTALL TO  
 GRID



**STEP 22:**  
 APPAREL HOOK INSTALLATION SHOWN ABOVE.

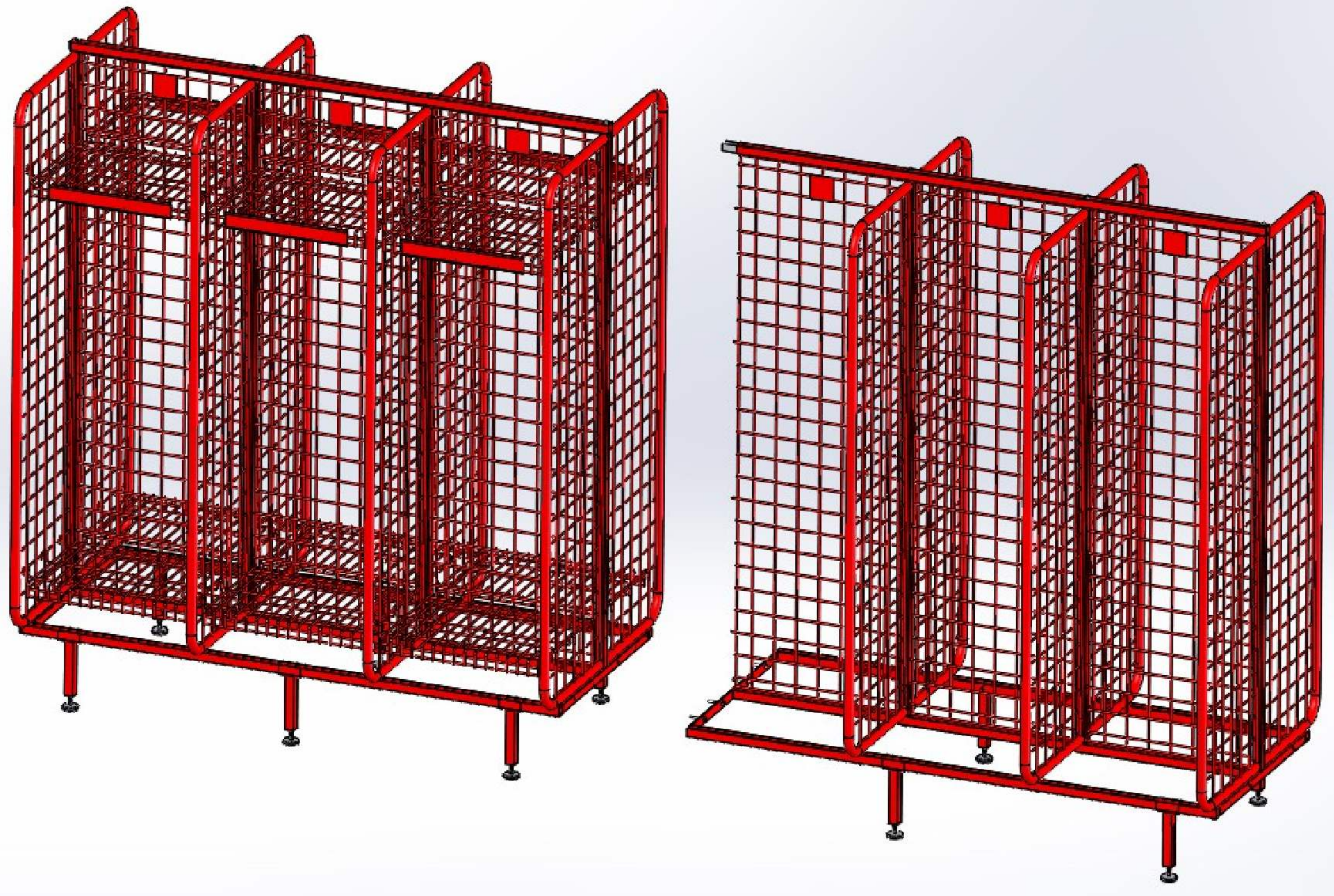
**GEARGRID**  
 PROPRIETARY AND CONFIDENTIAL  
 THE INFORMATION CONTAINED IN THIS DRAWING  
 IS THE SOLE PROPERTY OF GEARGRID  
 CORPORATION. ANY REPRODUCTION IN PART  
 OR AS A WHOLE WITHOUT THE WRITTEN  
 PERMISSION OF GEARGRID CORPORATION IS  
 PROHIBITED.

INTERPRET DIM AND TOLERANCE PER  
 ASME Y14.5M-1994  
 THIRD ANGLE PROJECTION

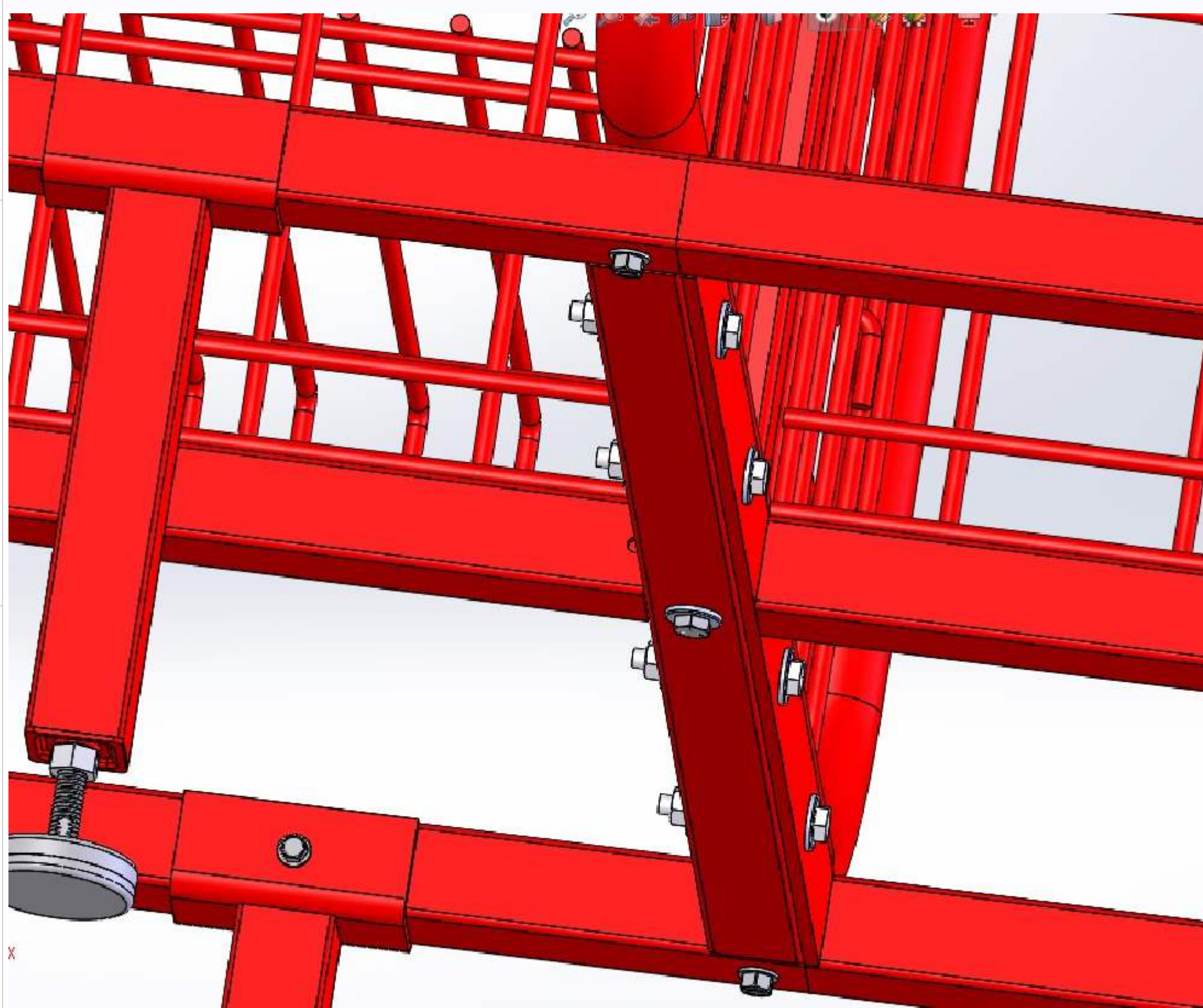
TITLE: **GEARGRID ISLAND ASSEMBLY**

SIZE	PART NO.	REV
<b>D</b>		

DO NOT SCALE DRAWING | SHEET 7 OF 8



**STEP 23:**  
 ADDING EXTENSION UNITS TO THE START UNIT WOULD LOOK LIKE THE IMAGE TO THE LEFT.  
 FOLLOW ALL PREVIOUS STEPS EXCEPT DOORS AND TOPS TO ASSEMBLE THE EXTENSION UNITS.  
 AFTER THE EXTENSION UNIT IS BOLTED UP THEN INSTALL TOPS DOORS AND SHELVES.



**SECURING BASES:**  
 SHOWN LEFT IS THE BASE-EXTENSION BOLTED TO THE BASE-START.

**\* NOTE - FLAT BAR PORTION OF BASE EXTENSION BOLTS TO THE 1-1/4" TUBE ALWAYS**