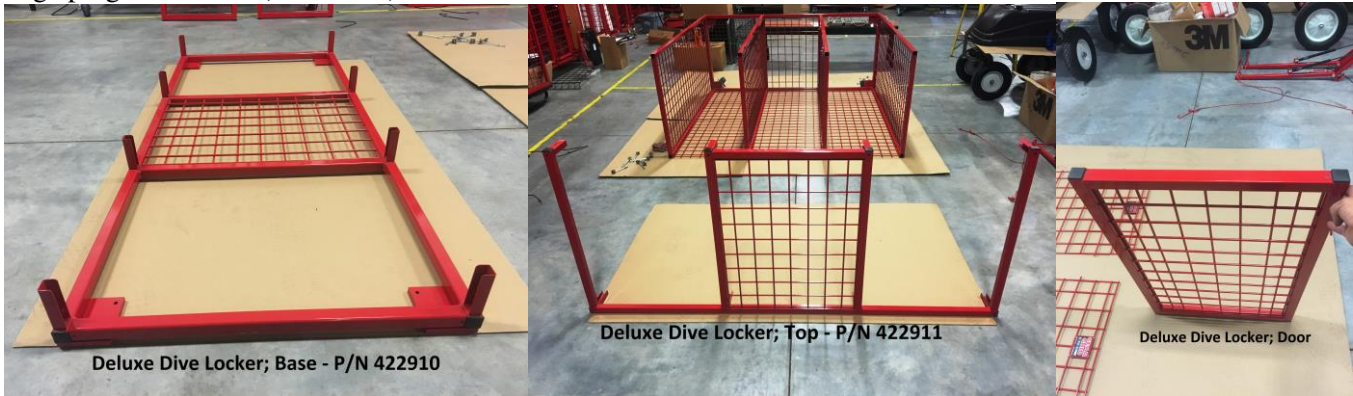


GEARGRID FIRE

Deluxe Dive Locker Assembly Instructions

Tools needed for assembly: 3/8 Socket wrench, 9/16 socket, 7/16 socket, 1/2 Socket, 1/2 Wrench, Allen wrench, rubber mallet. Caution, this is a (2) person assembly

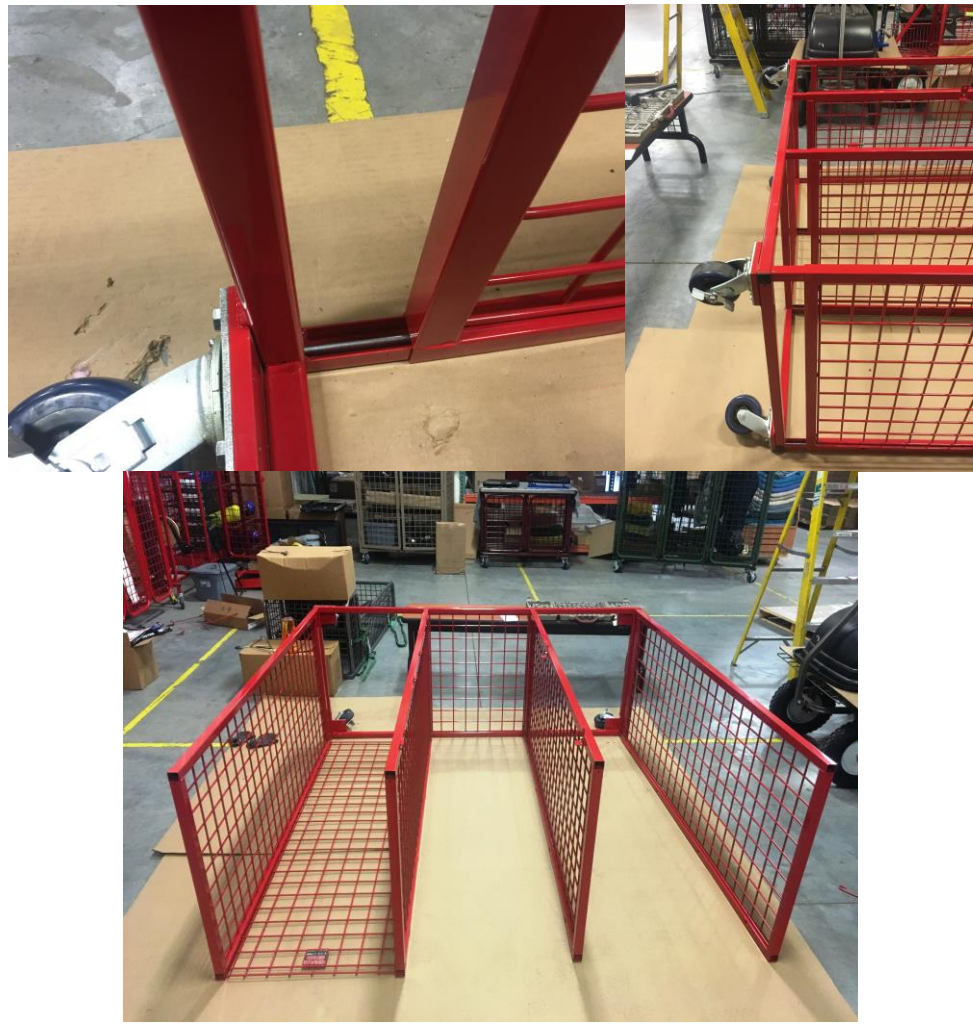
Step 1. Layout cardboard to protect your investment while assembling. Next, install 11ga plugs into base, and top, and 16ga plugs for doors. (See Photo)



Step 2. Grab base and install casters using 3/8-16x5/8 bolts, and tighten. (3 per caster) Place (1) 6-1/2" bolt and (1) washer into the corners of the base that align with channels, and thread into wedge nut. Use (4) 5-1/2" Bolts and washers in remaining (4) holes of base. Wedge nuts must be in this orientation. (See Photo) Do not tighten wedge nut bolts at this time.



Step 3. Grab Sides and slide them just over the base channels (this will make installing back grids easier) (See photo)
When laying out side panels make sure the punched holes are to the back of the base. Side panels should be placed in this order from left to right. Side panel, then side panel with hinges for doors, then side panel with hasp, then side panel.(See Photo)



Step 4. Make sure to open sides up. Doing this will make installing back grids easier. Next grab back grid, make sure all Gear Grid stickers are facing up, and insert long wires into side tube, and then make sure the wires line up to the holes on next side panel then press sides together to hold back grid into place. Do this for all back panels. (See photos)



Step 5. Next, flush up the base to the side tube panels. (See photo) Next, tighten all 6-1/2" bolts and 5-1/2" base bolts. (See photo)



Step 6. Grab top, and insert (8) 5-1/2" bolts, washers, and wedge nuts. Wedge nuts must be in this orientation. (See photo)



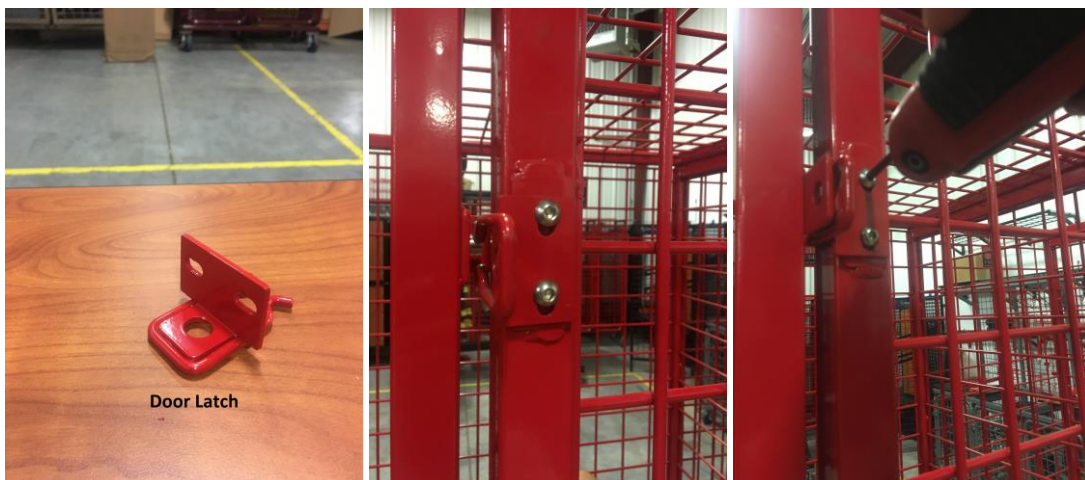
Step 7. Insert top into side panels, and flush up. (See photo) Now, tighten all bolts.



Step 8. Lock back caster wheels, and stand Deluxe Dive Locker up. Now you are ready to install doors. (See Photo) Next, grab door bushing and place the (4) hinges. (See photo) Now grab door and mate hinges. (See photo)



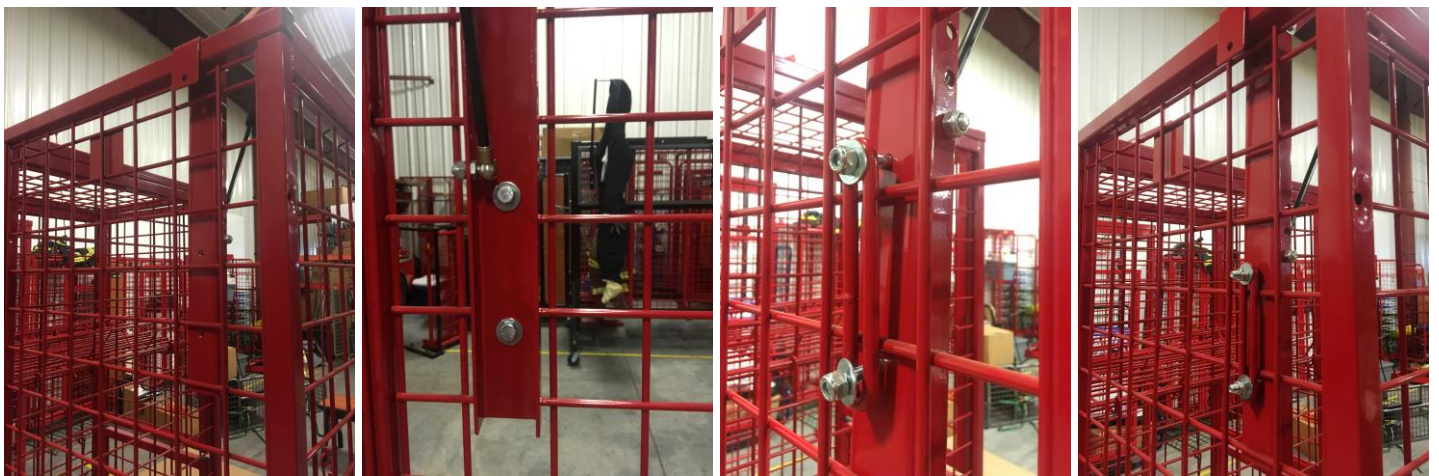
Step 9. Grab door latch (See Photo) (2) 1/4x20-3/8 button head screws, and attach to door. (See photo) Do not tighten hardware. Next close door to center door latch, now tighten hardware.



Step 10. After doors are attached you are now ready to install shelves. Install shelves in desired locations. The shelf hook on the left side should be sitting behind the side panel vertical wire, and the shelf hook on the right side should be sitting in front of the side panel vertical wire. (See photo)



Step 11. Attaching dive suit hanger. Grab dive suit hanger and place it on the top frame square tube. (See photo) Next, grab (2) 5/16-18x1-1/2 bolts and (2) 5/16 washers and place in the holes of the dive suit hanger channel. (See photo) Next grab hanger retainer bar, (2) 5/16 washers, (2) 5/16 lock nuts and secure dive suit hanger to Deluxe Dive Locker.



Your Deluxe Dive Locker Unit is now complete.

